



Report created on 27 March 2022

---

# COVID-19

## Weekly Surveillance Report, Tasmania

# COVID-19 Weekly Surveillance Report, Tasmania

Public Health Emergency Operations Centre

**Report created on 27 March 2022**

This report describes weekly and overall trends in COVID-19 case notifications, PCR and rapid antigen testing, and hospitalisations and deaths, from 15 December 2021 to 26 March 2022.

The focus of this report is on COVID-19 cases notified in Tasmania since the lifting of restrictions to the Tasmanian borders on 15 December 2021. Prior to this date there were 238 cases of COVID-19 recorded in Tasmania, with 13 deaths caused by COVID-19 or with COVID-19 as a contributing factor. 232 of these earlier cases and all 13 deaths were notified in 2020. A further 6 cases were notified in 2021 prior to 15 December 2021.

Following the border changes on 15 December 2021, COVID-19 was imported from interstate, and there has been widespread community transmission of COVID-19 in Tasmania.

**Caveats to the data:** Information presented in this report is based on data available in the Tasmanian Notifiable Diseases Database (TNDD) at the time of reporting and is subject to change. Reporting week is the epidemiological week from Sunday to Saturday. Data are presented for the week ending on the date shown in the column header (e.g. data for the week of 27 February to 5 March have the column header "5 March"). Rates presented are calculated as number of cases per 1000 people and number of PCR tests per 1000 people.

# Section 1: COVID-19 Cases and Number of Cases per 1000 People in Tasmania

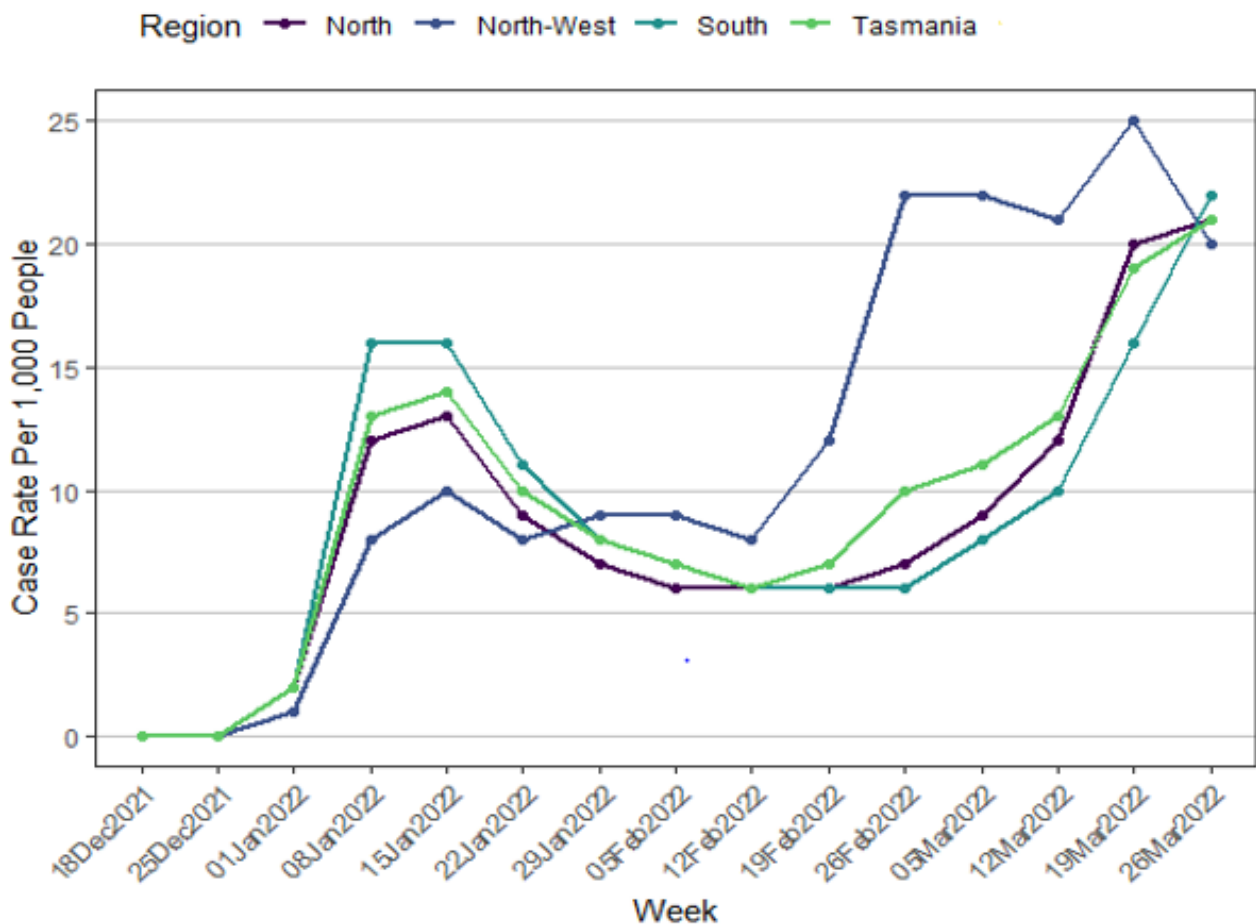
## 1.1 Weekly COVID-19 case numbers, and number of cases per 1000 people, by region.

Table 1: COVID-19 cases and number of cases per 1000 people (rate) per week for each of the last 4 weeks, and total cases notified since 15 December 2021, by region of residence in Tasmania.

	05Mar2022		12Mar2022		19Mar2022		26Mar2022		Total Since 15 December 2021	
Region	Cases	Rate	Cases	Rate	Cases	Rate	Cases	Rate	Total Cases	Overall Rate
North	1,275	9	1,817	12	2,988	20	3,069	21	19,217	129
North-West	2,484	22	2,361	21	2,822	25	2,307	20	19,789	174
South	2,298	8	2,785	10	4,552	16	6,210	22	37,998	137
<b>Total</b>	<b>6,057</b>	<b>11</b>	<b>6,963</b>	<b>13</b>	<b>10,362</b>	<b>19</b>	<b>11,586</b>	<b>21</b>	<b>80,281*</b>	<b>148</b>

Region is based on residential address provided at the time of PCR testing or report of positive RAT. All rates presented are calculated as cases per 1000 people. \*Includes 3,277 cases from interstate and overseas who were tested in Tasmania as well as Tasmanian residents with a missing postcode.

- From 15 December 2021 to 26 March 2022, a total of 80,281 COVID-19 cases were notified in Tasmania.
- Of these, 19,217 cases resided in the North, 19,789 cases resided in the North-West and 37,998 cases resided in the South. An additional 3,277 cases were tested in Tasmania, who reside interstate, overseas or omitted their postcode.



**Figure 1:** Number of weekly COVID-19 cases per 1000 people (rate) from 15 December 2021 to 26 March 2022, by region of residence in Tasmania.

- From 15 December 2021 to 26 March 2022, a total of 80,281 COVID-19 cases were notified in Tasmania.
- Of these, 19,217 cases resided in the North, 19,789 cases resided in the North-West and 37,998 cases resided in the South. An additional 3,277 cases were tested in Tasmania, who reside interstate, overseas or had inadequate address details.
- From 15 December 2021 to 26 March 2022, the total number of cases per 1000 people in Tasmania was 148.
- From 19 March 2022 to 26 March 2022, the weekly number of cases per 1000 people in Tasmania increased from 19 to 21.
- From 15 December 2021 to 26 March 2022, the region with the highest overall number of cases per 1000 people was the North-West with 174.
- From 19 March 2022 to 26 March 2022, the weekly number of cases per 1000 people in the North-West decreased from 25 to 20.
- From 19 March 2022 to 26 March 2022, the weekly number of cases per 1000 people in the South increased from 16 to 22.

## 1.2 Weekly case numbers, and number of cases per 1000 people (rate) by Local Government Area

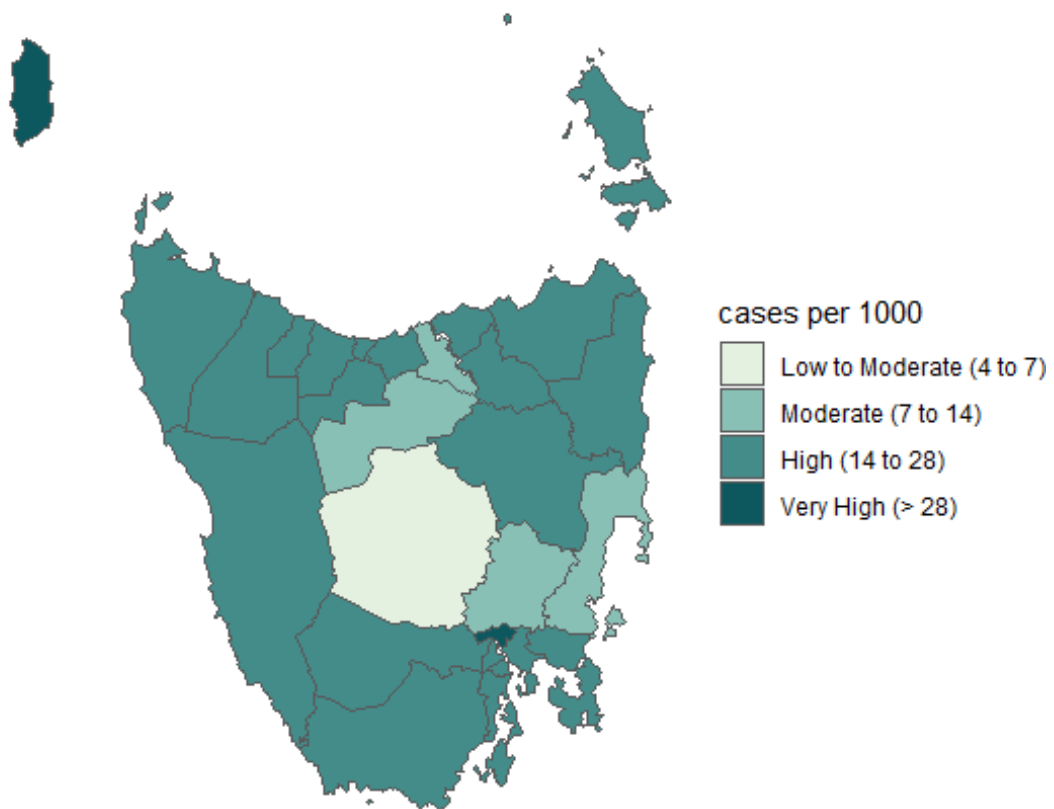
Table 2: COVID-19 cases and number of cases per 1000 people (rate) notified per week in Tasmania for each of the last 4-weeks, and total cases notified since 15 December 2021, by Local Government Area (LGA)\*.

		05Mar2022		12Mar2022		19Mar2022		26Mar2022		Total Since 15 December 2021	
LGA	Population	Cases	Rate	Cases	Rate	Cases	Rate	Cases	Rate	Total Cases	Overall Rate
Break O'Day	6346	6	1	26	4	92	14	98	15	529	83
Brighton	18123	471	26	398	22	513	28	694	38	4,187	231
Burnie	19701	532	27	550	28	677	34	520	26	3,936	200
Central Coast	22157	371	17	323	15	391	18	391	18	3,620	163
Central Highlands	2166	5	2	5	2	1	0	11	5	38	18
Circular Head	8152	105	13	44	5	93	11	161	20	1,064	131
Clarence	58729	400	7	518	9	1,007	17	1,336	23	7,975	136
Derwent Valley	10518	69	7	65	6	135	13	267	25	1,153	110
Devonport	25747	806	31	691	27	750	29	501	19	5,841	227
Dorset	6685	28	4	61	9	106	16	143	21	637	95
Flinders	1004	0	0	1	1	12	12	27	27	49	49
George Town	7117	49	7	52	7	73	10	112	16	720	101
Glamorgan-Spring Bay	4750	6	1	19	4	51	11	42	9	315	66
Glenorchy	47963	326	7	559	12	850	18	1,245	26	7,503	156
Hobart	55250	301	5	408	7	784	14	1,131	20	7,614	138
Huon Valley	17966	126	7	97	5	172	10	309	17	1,675	93
Kentish	6393	93	15	95	15	175	27	94	15	800	125
King Island	1612	14	9	25	16	18	11	50	31	247	153
Kingborough	38628	421	11	430	11	636	16	713	18	4,938	128
Latrobe	11961	291	24	217	18	172	14	182	15	1,837	154
Launceston	68,813	1,032	15	1,101	16	1,409	20	1,742	25	11,546	168

		05Mar2022		12Mar2022		19Mar2022		26Mar2022		Total Since 15 December 2021	
LGA	Population	Cases	Rate	Cases	Rate	Cases	Rate	Cases	Rate	Total Cases	Overall Rate
<b>Meander Valley</b>	20037	192	10	230	11	367	18	259	13	<b>1,696</b>	<b>85</b>
<b>Northern Midlands</b>	13598	161	12	196	14	259	19	316	23	<b>1,926</b>	<b>142</b>
<b>Sorell</b>	16030	148	9	262	16	334	21	364	23	<b>2,084</b>	<b>130</b>
<b>Southern Midlands</b>	6400	19	3	17	3	37	6	46	7	<b>297</b>	<b>46</b>
<b>Tasman</b>	2479	5	2	7	3	32	13	52	21	<b>157</b>	<b>63</b>
<b>Waratah-Wynyard</b>	13900	250	18	395	28	456	33	290	21	<b>1,979</b>	<b>142</b>
<b>West Coast</b>	4132	22	5	19	5	90	22	117	28	<b>436</b>	<b>106</b>
<b>West Tamar</b>	24423	51	2	148	6	302	12	202	8	<b>1,544</b>	<b>63</b>

\*LGA is based on residential address self-reported at the time of PCR testing or reporting of a positive RAT. If valid information has not been provided and LGA cannot be determined, these cases have been excluded. All rates presented are calculated as number of cases per 1000 people.

## Case Rate - 20Mar2022 to 26Mar2022



**Figure 2:** Weekly number of cases per 1000 people (rate), presented as a metric from low to moderate (4 to 7 cases) to very high (>28 cases), by Local Government Area in Tasmania.

- From 15 December 2021 to 26 March 2022, the Local Government Area with the highest total number of cases per 1000 people was Devonport with 227 cases.
- In the week ending 26 March 2022, very high weekly cases per 1000 people were notified in Brighton with 38 cases, followed by King Island with 31 cases.
- From March 19 2022 to March 26 2022, weekly number of cases per 1000 people increased in all Local Government Areas except for Burnie, Devonport, Kentish, Meander Valley, Waratah-Wynyard and West Tamar.

### 1.3 COVID-19 case numbers and number of cases per 1000 people (rate), by age group

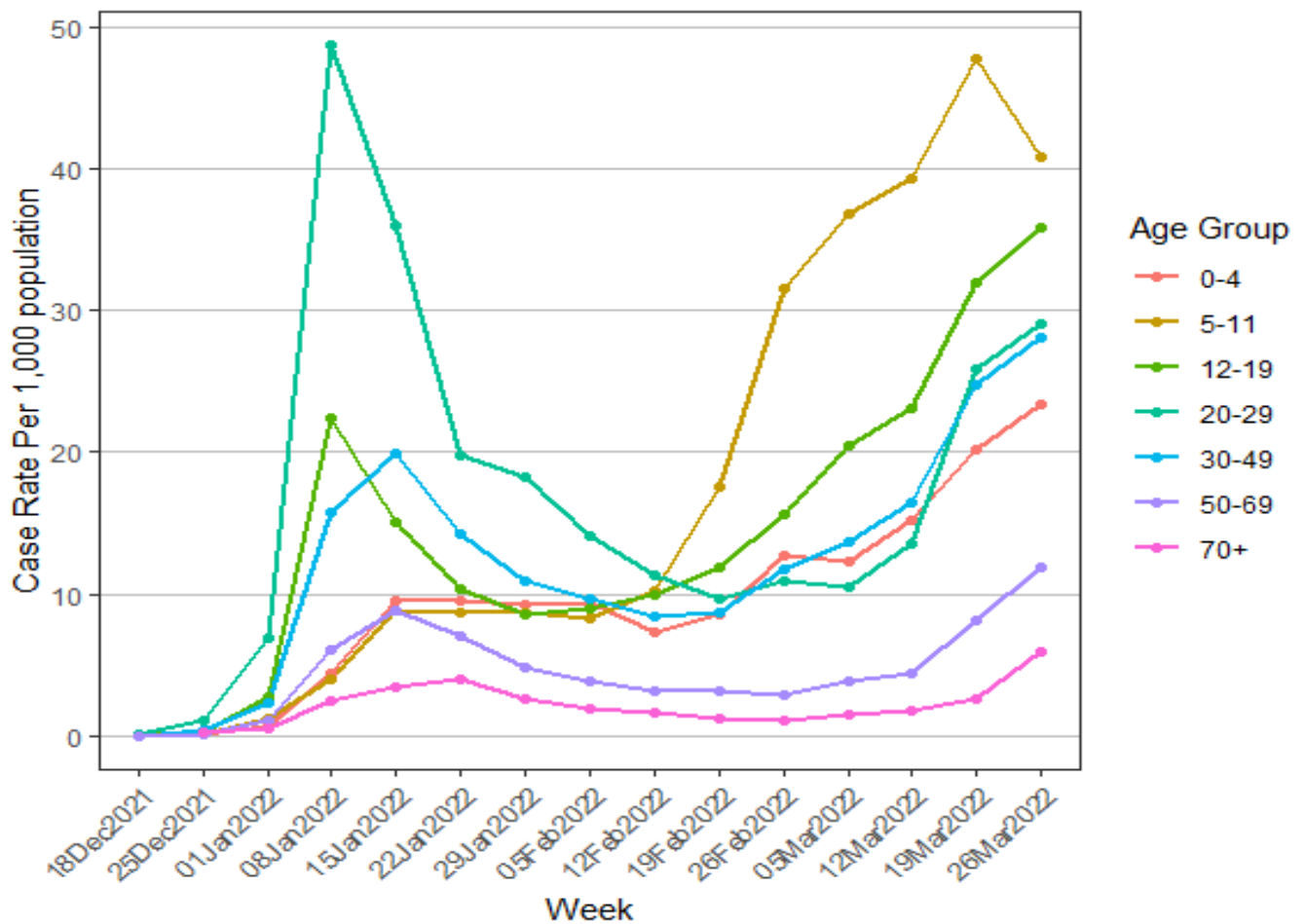
**Table 3: COVID-19 cases and number of cases per 1000 people (rate) per week notified in Tasmania for each of the last 4-weeks, and total number and overall number of cases per 1000 people (rate) since 15 December 2021, by age group.**

		05Mar2022		12Mar2022		19Mar2022		26Mar2022		Total Since 15 December 2021	
Age Group	Population	Cases	Rate	Cases	Rate	Cases	Rate	Cases	Rate	Total Cases	Overall Rate
<b>0-4</b>	29,267	359	12	446	15	593	20	684	23	<b>4,175</b>	<b>143</b>
<b>5-11</b>	45,033	1,661	37	1,769	39	2,151	48	1,839	41	<b>11,878</b>	<b>264</b>
<b>12-15</b>	26,308	687	26	747	28	951	36	1,002	38	<b>5,397</b>	<b>205</b>
<b>16-19</b>	24,713	360	15	433	18	680	28	831	34	<b>5,689</b>	<b>230</b>
<b>20-29</b>	65,756	694	11	893	14	1,705	26	1,911	29	<b>16,827</b>	<b>256</b>
<b>30-39</b>	65,410	960	15	1,148	18	1,781	27	2,043	31	<b>14,321</b>	<b>219</b>
<b>40-49</b>	64,257	820	13	983	15	1,437	22	1,609	25	<b>9,689</b>	<b>151</b>
<b>50-59</b>	72,013	332	5	397	6	749	10	1,078	15	<b>6,223</b>	<b>86</b>
<b>60-69</b>	70,868	215	3	241	3	414	6	613	9	<b>3,694</b>	<b>52</b>
<b>70-79</b>	50,893	87	2	107	2	144	3	303	6	<b>1,655</b>	<b>33</b>
<b>80-84</b>	13,647	12	1	13	1	36	3	85	6	<b>372</b>	<b>27</b>
<b>85+</b>	12,615	18	1	16	1	19	2	74	6	<b>351</b>	<b>28</b>
<b>Total</b>	<b>540,780</b>	<b>6,206</b>	<b>11</b>	<b>7,193</b>	<b>13</b>	<b>10,660</b>	<b>20</b>	<b>12,072</b>	<b>22</b>	<b>80,281</b>	<b>148</b>

Age group is based on age or date of birth provided at time of PCR testing or reporting of a positive RAT. People who have not provided a valid age or date of birth have been excluded. All rates presented are calculated as cases per 1000 people.

- In the reporting timeframe, the 5-11 age group had the highest total number of cases per 1000 people with 264 cases, followed by the 20-29 age group with 256 cases.





**Figure 3:** Weekly number of COVID-19 cases per 1000 people per week (rate) notified in Tasmania, since 15 December 2021, by age group.

- From 15 December 2021 to 26 March 2020, the age group with the highest total number of cases per 1000 people was children aged 5-11 years with 264 cases, followed by young adults aged 20-29 years with 256 cases.
- While the weekly number of cases per 1000 people declined in children aged 5-11 years from the previous week, this age group continues to have the highest weekly number of cases per 1000 people with 41 cases.
- From 19 March 2022 to 26 March 2022, the weekly number of cases per 1000 people increased in all age groups except for children aged 5-11 years.

## 1.4 Weekly COVID-19 case numbers in Tasmania by method of diagnosis

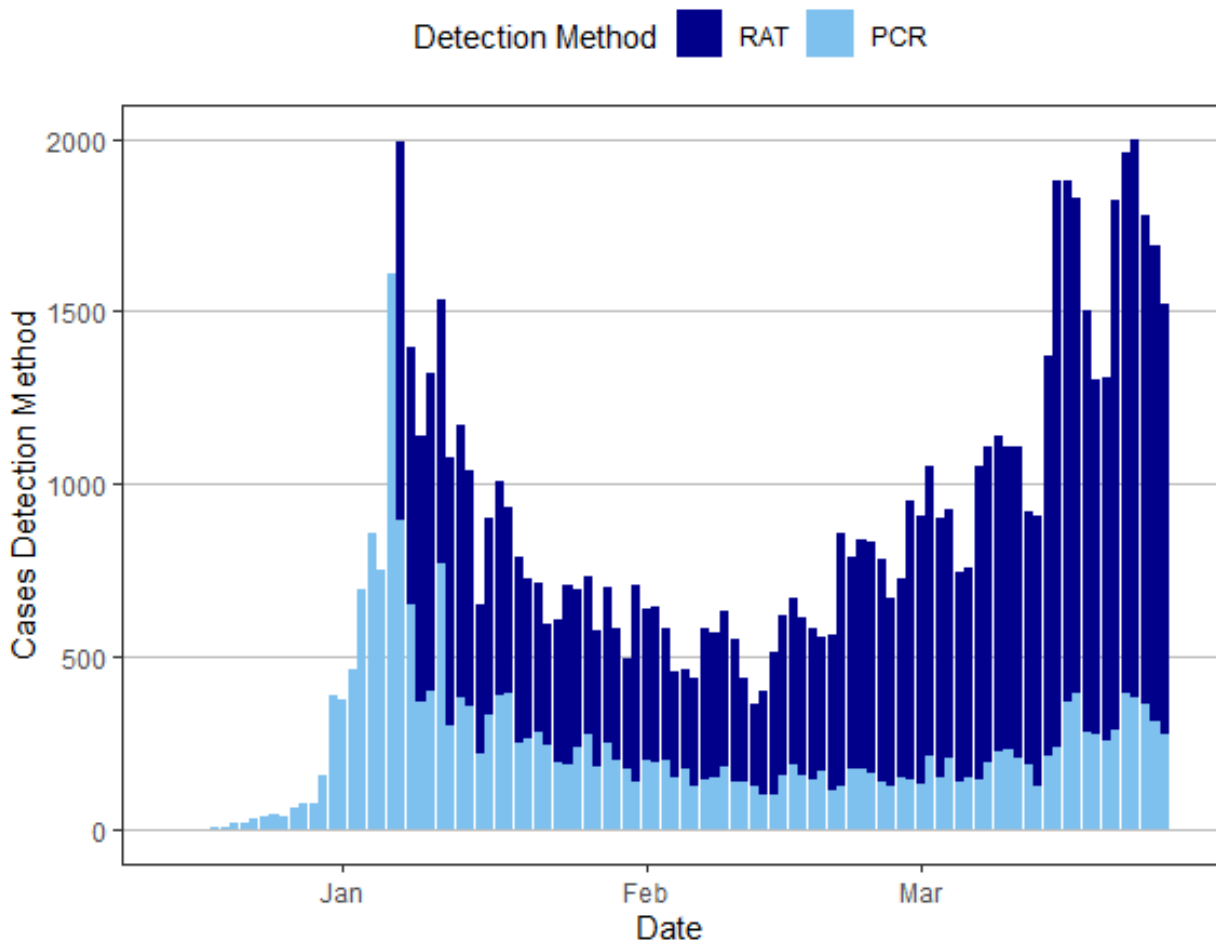
Table 4. Weekly number of people diagnosed with COVID-19 from 15 December 2021 to 26 March 2022, by PCR and rapid antigen testing (RAT).

Reporting Week	PCR	RAT	Total Recorded Cases
18Dec2021	7 (100%)	0 (0%)	7
25Dec2021	157 (100%)	0 (0%)	157
01Jan2022	1166 (100%)	0 (0%)	1,166
08Jan2022	5923 (76%)	1841 (24%)	7,764
15Jan2022	2804 (35%)	5125 (65%)	7,929
22Jan2022	2152 (38%)	3510 (62%)	5,662
29Jan2022	1529 (33%)	3077 (67%)	4,606
05Feb2022	1233 (31%)	2750 (69%)	3,983
12Feb2022	1004 (28%)	2585 (72%)	3,589
19Feb2022	1020 (26%)	2936 (74%)	3,956
26Feb2022	1019 (19%)	4312 (81%)	5,331
05Mar2022	1131 (18%)	5075 (82%)	6,206
12Mar2022	1344 (19%)	5849 (81%)	7,193
19Mar2022	1906 (18%)	8754 (82%)	10,660
26Mar2022	2272 (19%)	9800 (81%)	12,072

Where both a PCR and RAT are notified to Public Health Services the PCR test is reported.

- Since 9 January 2022, rapid antigen testing (RAT) has been the predominant diagnostic method in Tasmania and currently comprises 81% of weekly positive COVID-19 notifications to Public Health Services.

## Case Detection Method



**Figure 4.** Number of COVID-19 cases\* in Tasmania per day from 15 December 2021 to 26 March 2022, by method of diagnosis (PCR and rapid antigen tests).

\*Case numbers include positive notifications to Public Health Services from pathology laboratories providing PCR results, and self-reported rapid antigen tests.

- To early January 2022, PCR testing was the main method of testing used for COVID-19 diagnosis. On availability of RAT testing, this method has since become the preferred testing method in the Tasmanian population.
- With school returning to face-to-face teaching delivery and general test availability, RAT tests have been utilised to detect two thirds or more of cases of COVID-19 since mid-January 2022.

## Section 2: PCR Testing

### 2.1 - PCR Positivity Percentage by Region in Tasmania

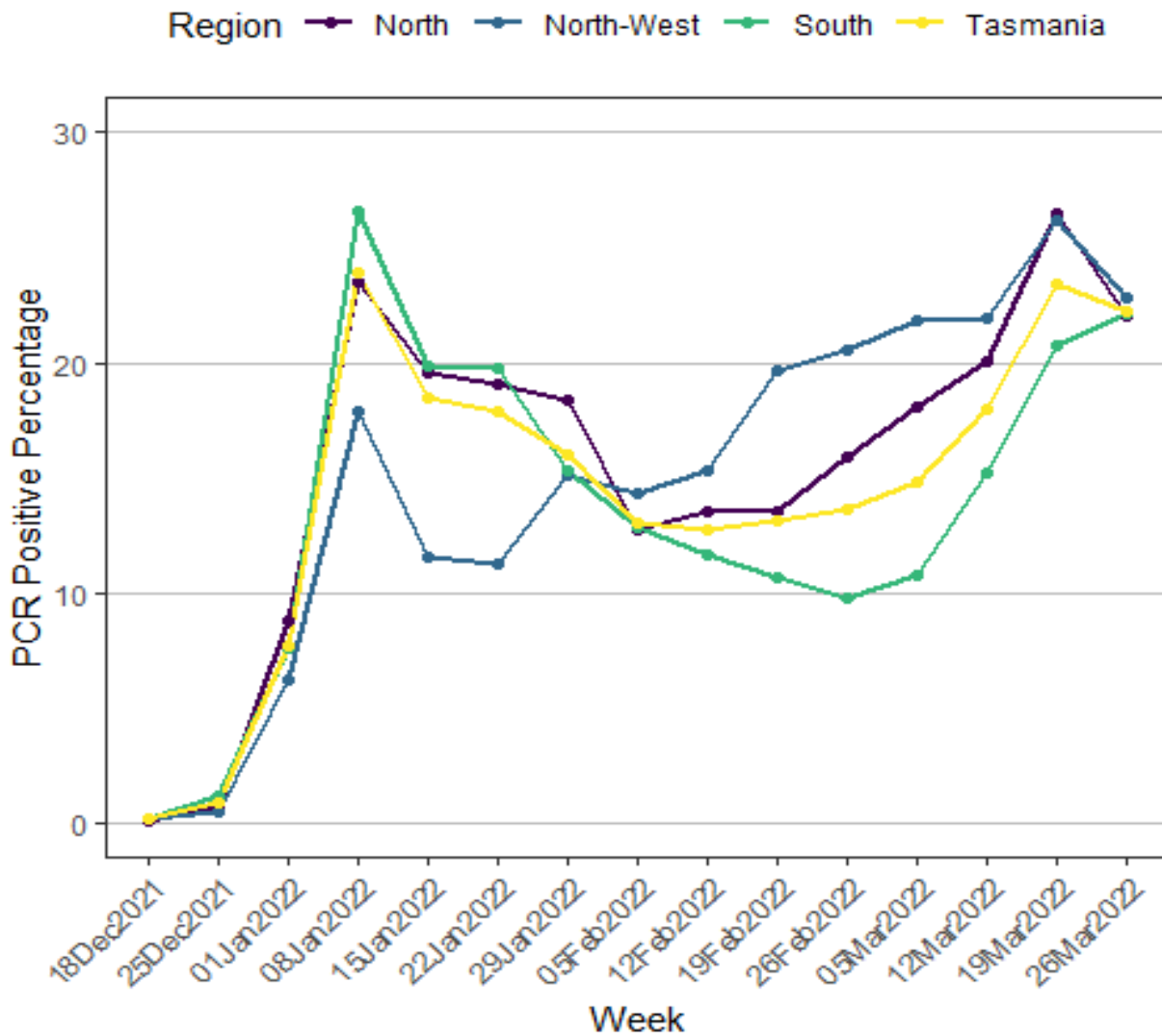
**Table 5: Number of COVID-19 PCR tests (both positive and negative) and percentage of PCR tests positive for COVID-19 (% Pos) for each of the last 4-weeks and since 15 December 2021, by region of residence in Tasmania.**

Region	05Mar2022		12Mar2022		19Mar2022		26Mar2022		Since 15Dec2021	
	Tests	% Pos	Tests	% Pos	Tests	% Pos	Tests	% Pos	Total Tests	Overall % Pos
<b>North</b>	1,706	18	1,894	20	2,417	26	2,696	22	<b>42,291</b>	<b>16</b>
<b>North-West</b>	1,673	22	1,686	22	1,610	26	1,579	23	<b>30,942</b>	<b>15</b>
<b>South</b>	4,327	11	3,940	15	4,409	21	5,929	22	<b>94,064</b>	<b>14</b>
<b>Total</b>	<b>7,706</b>	<b>15</b>	<b>7,520</b>	<b>18</b>	<b>8,436</b>	<b>23</b>	<b>10,204</b>	<b>22</b>	<b>170,216*</b>	<b>15</b>

Region is based on residential address provided at the time of PCR testing.

\*Includes 2,919 cases for whom region is unknown.

- From 15 December 2021 to 26 March 2022, a total of 170,216 PCR tests were performed in Tasmania, with an increase in test positivity seen over the past four weeks.
- In the period from 15 December 2021, 15% of all PCR tests performed statewide tested positive for COVID-19, with the Northern region recording a slightly higher result than the state's average percent positives.



**Figure 5:** Weekly percentage of PCR tests positive for COVID-19 from 15 December 2021 to 26 March 2022, by region of residence in Tasmania and overall.

- From 15 December 2021 to 26 March 2022, a total of 170,216 PCR tests were performed in Tasmania.
- From 15 December 2021 to 26 March 2022, 15% of all PCR tests performed statewide tested positive for COVID-19.
- In the week ending March 26, 10,204 PCR tests were performed in Tasmania.
- In the week ending March 26, 22% of all PCR tests performed statewide tested positive for COVID-19.

## 2.2 PCR Testing by Age Group

**Table 6: Number of PCR tests performed in Tasmania and number of PCR tests per 1000 people (rate) per week for each of the last 4-weeks and since 15 December 2021, by age group.**

		05Mar2022		12Mar2022		19Mar2022		26Mar2022		Total since 15Dec2021	
Age Group	Population	Tests	Rate	Tests	Rate	Tests	Rate	Tests	Rate	Total Tests	Overall Rate
0-4	29,267	576	20	631	22	682	23	844	29	7,754	265
5-11	45,033	822	18	775	17	695	15	746	17	7,981	177
12-15	26,308	353	13	401	15	342	13	452	17	4,713	179
16-19	24,713	325	13	300	12	345	14	412	17	7,628	309
20-29	65,756	1,085	17	1,081	16	1,440	22	1,464	22	34,028	517
30-39	65,410	1,283	20	1,388	21	1,466	22	1,795	27	30,210	462
40-49	64,257	1,084	17	1,113	17	1,192	19	1,391	22	20,363	317
50-59	72,013	703	10	701	10	894	12	1,076	15	18,729	260
60-69	70,868	626	9	581	8	647	9	814	11	14,802	209
70-79	50,893	534	10	401	8	540	11	669	13	11,215	220
80-84	13,647	178	13	118	9	168	12	251	18	4,510	330
85+	12,615	225	18	157	12	189	15	472	37	8,283	657
<b>Total</b>	<b>540,780</b>	<b>7,796</b>	<b>14</b>	<b>7,647</b>	<b>14</b>	<b>8,600</b>	<b>16</b>	<b>10,386</b>	<b>19</b>	<b>170,216</b>	<b>315</b>

Age group is based on the age provided at time of PCR testing. All rates presented are calculated as number of PCR tests per 1000 people.

- From December 15 2022 to 26 March 2022, a total of 170,216 PCR tests were performed in Tasmania.
- From December 15 2022 to 26 March 2022, the total number of PCR tests per 1000 people in Tasmania was 315.
- From December 15 2022 to 26 March 2022, the overall number of PCR tests per 1000 people was highest in those aged 85 years and older with 657 PCR tests followed by young adults aged 20 to 29 years with 517.
- In the week ending 19 March 2022, the weekly number of PCR tests per 1000 people in Tasmania was 19, increasing from 16 in the previous week.
- In the week ending 19 March 2022, the weekly number of PCR tests per 1000 people was highest in adults aged 85 years and older with 37, followed by those aged 0-4 years with 29.

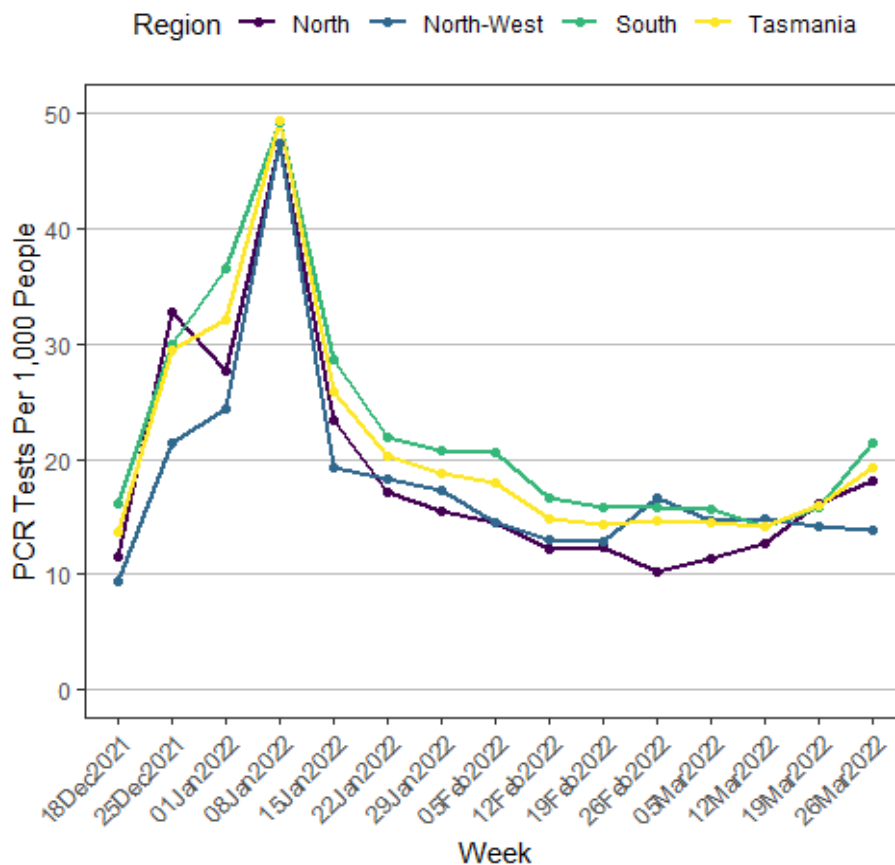
## 2.3 PCR Testing by Region

**Table 7: Number of PCR tests performed and number of PCR tests per 1000 people (rate) per week for each of the last 4-weeks and since 15 December 2021, by region of residence in Tasmania.**

		05Mar2022		12Mar2022		19Mar2022		26Mar2022		Total since 15Dec2021	
Region	Population	Tests	Rate	Tests	Rate	Tests	Rate	Tests	Rate	Total Tests	Overall Rate
North	149,488	1,706	11	1,894	13	2,417	16	2,696	18	42,291	283
North-West	113,740	1,673	15	1,686	15	1,610	14	1,579	14	30,942	272
South	277,552	4,327	16	3,940	14	4,409	16	5,929	21	94,064	339
<b>Total</b>	<b>540,780</b>	<b>7,796</b>	<b>14</b>	<b>7,647</b>	<b>14</b>	<b>8,600</b>	<b>16</b>	<b>10,386</b>	<b>19</b>	<b>170,216*</b>	<b>315</b>

Region is based on residential address provided at time of PCR testing. All rates presented are calculated as PCR tests per 1000 people. \*Includes 2,919 cases for whom region is unknown.

- Of the total 170,216 PCR tests performed in Tasmania between 15 December 2021 and 26 March 2022, the testing rate is highest in the South, with 94,064 people testing in the period.



**Figure 6:** Weekly number of PCR tests per 1000 people since 15 December 2021, by region of residence in Tasmania.

- From December 15 2022 to 26 March 2022, a total of 170,216 PCR tests were performed in Tasmania.
- From December 15 2022 to 26 March 2022, the total number of PCR tests per 1000 people in Tasmania was 315.
- From December 15 2022 to 26 March 2022, there were 42,291 PCR tests performed for those living in the North, 30,942 for those living in the North-West and 94,064 for those living in the South.
- The overall number of PCR tests per 1000 people was highest in the South with 339 PCR tests per 1000 people performed since 15 December 2021.
- In the week ending March 26 2022, there were 10,386 PCR tests performed across the state.
- In the week ending March 26 2022, the weekly number of PCR tests performed per 1000 people was 19, increasing from 16 in the previous week.



## 2.4 - PCR testing by Local Government Area in Tasmania

**Table 8: Number of PCR tests performed and number of PCR tests per 1000 population (rate) per week for each of the last 4-weeks and since 15 December 2021, by Local Government Area (LGA) in Tasmania.**

		05Mar2022		12Mar2022		19Mar2022		26Mar2022		Total Since 15 December 2021	
LGA	Population	Tests	Rate	Tests	Rate	Tests	Rate	Tests	Rate	Total Tests	Overall Rate
Break O'Day	6,346	20	3	23	4	47	7	38	6	917	145
Brighton	18,123	356	20	266	15	304	17	448	25	5,483	303
Burnie	19,701	326	17	373	19	327	17	299	15	5,982	304
Central Coast	22,157	285	13	283	13	302	14	285	13	5,929	268
Central Highlands	2,166	14	6	14	6	15	7	16	7	386	178
Circular Head	8,152	57	7	42	5	44	5	94	12	1,176	144
Clarence	58,729	906	15	850	14	999	17	1,356	23	19,223	327
Derwent Valley	10,518	168	16	105	10	107	10	162	15	2,426	231
Devonport	25,747	534	21	485	19	422	16	443	17	8,952	348
Dorset	6,685	35	5	54	8	60	9	88	13	1,114	167
Flinders	1,004	5	5	1	1	26	26	9	9	124	124
George Town	7,117	64	9	59	8	58	8	79	11	1,419	199
Glamorgan-Spring Bay	4,750	24	5	18	4	31	7	30	6	831	175
Glenorchy	47,963	768	16	690	14	821	17	1,070	22	18,059	377
Hobart	55,250	963	17	987	18	1,105	20	1,368	25	25,569	463
Huon Valley	17,966	207	12	115	6	161	9	263	15	3,874	216
Kentish	6,393	72	11	73	11	86	13	64	10	1,388	217
King Island	1,612	3	2	9	6	11	7	11	7	585	363
Kingborough	38,628	574	15	582	15	558	14	764	20	12,497	324
Latrobe	11,961	218	18	183	15	192	16	145	12	3,291	275
Launceston	68,813	1,032	15	1,101	16	1,409	20	1,742	25	26,133	380

		05Mar2022		12Mar2022		19Mar2022		26Mar2022		Total Since 15 December 2021	
LGA	Population	Tests	Rate	Tests	Rate	Tests	Rate	Tests	Rate	Total Tests	Overall Rate
<b>Meander Valley</b>	20,037	203	10	199	10	235	12	247	12	<b>3,793</b>	<b>189</b>
<b>Northern Midlands</b>	13,598	141	10	183	13	203	15	190	14	<b>3,181</b>	<b>234</b>
<b>Sorell</b>	16,030	247	15	213	13	222	14	333	21	<b>4,039</b>	<b>252</b>
<b>Southern Midlands</b>	6,400	84	13	81	13	64	10	98	15	<b>1,325</b>	<b>207</b>
<b>Tasman</b>	2,479	16	6	19	8	22	9	21	8	<b>352</b>	<b>142</b>
<b>West Coast</b>	4,132	23	6	17	4	24	6	58	14	<b>519</b>	<b>126</b>
<b>West Tamar</b>	24,423	206	8	274	11	379	16	303	12	<b>5,610</b>	<b>230</b>

LGA is based on residential address provided at time of PCR testing or report of positive RAT. All rates presented are calculated as PCR tests per 1000 people.

- From December 15 2021 to 26 March 2022, the Local Government Areas with the highest overall number of PCR tests per 1000 people were Hobart, Launceston, Glenorchy and King Island.
- In the week ending March 26 2022, the Local Government Areas with the highest weekly number of PCR tests per 1000 people were Hobart, Launceston, Brighton and Clarence.

## Section 3: Clinical Severity and Deaths

### 3.1 Clinical severity and deaths in individuals diagnosed with COVID-19 in Tasmania by reporting week

**Table 9: Number of individuals hospitalised due to COVID-19, number of individuals with COVID-19 admitted to ICU (for any reason), and deaths for which COVID-19 was a cause or contributing factor, by reporting week from 15 December 2021 to 26 March 2022.**

Reporting Week	Hospital Admissions due to COVID-19	Intensive Care Admissions	Deaths
18Dec2021	0	0	0
25Dec2021	0	0	0
01Jan2022	2	0	0
08Jan2022	13	2	0
15Jan2022	18	1	0
22Jan2022	22	5	4
29Jan2022	16	0	2
05Feb2022	11	2	3
12Feb2022	14	0	2
19Feb2022	11	1	2
26Feb2022	10	0	1
05Mar2022	20	4	0
12Mar2022	16	2	0
19Mar2022	20	1	1
26Mar2022	28	1	1
<b>Total</b>	<b>201</b>	<b>19</b>	<b>16</b>

- From 15 December 2021 to 26 March 2022, 201 cases were admitted to hospital **due** to COVID-19.
- From 15 December 2021 to 26 March 2022, 19 patients with COVID-19 were admitted to ICU.
- From 15 December 2021 to 26 March 2022, 16 people died where COVID-19 caused or contributed to their death.

## 3.2 Clinical severity and deaths in individuals diagnosed with COVID-19 in Tasmania, by age group

**Table 10: Number of individuals hospitalised due to COVID-19, number of individuals hospitalised with COVID-19, number of individuals with COVID-19 admitted to ICU (for any reason), and deaths for which COVID-19 was a cause or contributing factor, from 15 December 2021 to 26 March 2022 by age group.**

Age Group (years)	Hospital Admissions due to COVID-19*	All Hospital Admissions with COVID-19	Intensive Care Admissions	Deaths
0-4	24	38	3	0
5-11	3	14	0	0
12-15	3	9	0	0
16-19	0	8	1	0
20-29	16	55	3	0
30-39	17	53	1	0
40-49	17	34	0	0
50-59	23	52	2	1
60-69	27	52	4	5
70-79	32	56	5	1
80-84	17	32	0	3
85+	22	43	0	6
<b>Total</b>	<b>201</b>	<b>446</b>	<b>19</b>	<b>16</b>

Age group is based on age provided at time of PCR testing or reporting of a positive RAT. This table includes interstate and overseas residents who were diagnosed and managed for COVID-19 in Tasmania. Only recorded deaths, where the death is specifically attribute to COVID-19 have been included. Where the death is reported to have been attributed to 'other causes' it has been excluded.

- From 15 December 2021 to 26 March 2022, 446 cases were admitted to hospital and of these 201 (45%) were admitted to hospital **due** to COVID-19.
- From 15 December 2021 to 26 March 2022, 19 patients with COVID-19 were admitted to ICU.
- From 15 December 2021 to 26 March 2022, 16 people died where COVID-19 caused or contributed to their death.
- From December 15 2021 to 26 March 2022, 80 people younger than 50-years of age were hospitalised due to COVID-19. This comprised 40% of all those hospitalised due to COVID-19. Eight of these patients were admitted to ICU.
- From December 15 2021 to 26 March 2022, 24 children aged 4-years or younger were hospitalised due to COVID-19. This comprised 12% of all those hospitalised due to COVID-19. Three of these patients were admitted to ICU.
- From December 15 2021 to 26 March 2022, all deaths due to or contributed to by COVID-19 occurred in individuals aged 50-years and older.

### 3.3 Clinical severity and deaths in individuals diagnosed with COVID-19 in Tasmania, by vaccination status

**Table 1: Number of individuals hospitalised due to COVID-19, number of individuals hospitalised with COVID-19, number of individuals with COVID-19 admitted to ICU (for any reason), and deaths for which COVID-19 was a cause or contributing factor from 15 December 2021 to 26 March 2022, by vaccination status.**

Vaccination Doses	Reported Cases	Hospital Admissions due to COVID-19	All Hospital Admissions with COVID-19	Intensive Care Admissions	Deaths
0 doses	7,309	51	105	6	6
1 dose	11,082	13	27	1	0
2 or more doses	34,454	125	290	12	8
Unknown	27,436	12	24	0	2
<b>Total</b>	<b>80,281</b>	<b>201</b>	<b>446</b>	<b>19</b>	<b>16</b>

This table includes interstate and overseas residents who were diagnosed and managed for COVID-19 in Tasmania. Data should be interpreted with caution as vaccination information is based on self-report at the time of notification of a positive PCR or RAT. All deaths in people with COVID-19 are included unless the clinician determines that there is a clear alternative cause that is not related to COVID-19 or the cause of death is unknown.

- From 15 December 2021 to 26 March 2022, 446 cases were admitted to hospital and of these 201 (45%) were admitted to hospital **due** to COVID-19.
- From 15 December 2021 to 26 March 2022, 19 patients with COVID-19 were admitted to ICU.
- From 15 December 2021 to 26 March 2022, 16 people died where COVID-19 caused or contributed to their death.
- From 15 December 2021 to 26 March 2022, the case fatality rate in people who were unvaccinated was 0.08% while the case fatality rate in people who had received two or more doses of vaccine was 0.02%.
- From 15 December 2021 to 26 March 2022, the case fatality rate in people who were unvaccinated was four times higher than the case fatality rate in people who had received two or more doses of vaccine.



Department of **Health**  
GPO Box 125  
Hobart TAS 7001

1300 135 513

[www.health.tas.gov.au](http://www.health.tas.gov.au)