



Report created on 08 May 2022

---

# COVID-19

## Weekly Surveillance Report



# COVID-19 Weekly Public Facing Report, Tasmania

## Public Health Emergency Operations Centre

**Report created on 08 May 2022**

This report describes weekly and overall trends in COVID-19 case notifications, PCR testing, vaccination status, and clinical severity and deaths from 15 December 2021 to 7 May 2022.

The focus of this report is on COVID-19 cases notified in Tasmania since the lifting of restrictions to the Tasmanian borders on 15 December 2021. Prior to this date there were 238 cases of COVID-19 recorded in Tasmania, with 13 deaths caused by COVID-19 or with COVID-19 as a contributing factor. Of these earlier cases, 232 cases and all 13 deaths were notified in 2020. A further six cases were notified in 2021 prior to 15 December 2021.

Following the border changes on 15 December 2021, COVID-19 was imported from interstate, with subsequent widespread community transmission of COVID-19 in the Tasmanian community.

Caveats to the data: Information presented in this report is based on data available in the Tasmanian Notifiable Diseases Database (TNDD) at the time of reporting and is subject to change. Reporting week is the epidemiological week from Sunday to Saturday. Data are presented for the week ending on the date shown in the column header (e.g. data for the week of 27 February to 5 March have the column header "05 March 2022"). Rates presented are calculated as number of reported cases of COVID-19 per 1 000 people and number of PCR tests performed per 1000 people.

# Table of Contents

<b>Weekly Surveillance Report</b> .....	<b>0</b>
<b>COVID-19 Weekly Public Facing Report, Tasmania</b> .....	<b>2</b>
<b>Section 1: Total COVID-19 Cases and Number of Cases per 1000 People in Tasmania</b> .....	<b>4</b>
1.1 Weekly COVID-19 case numbers and number of cases per 1000 people, by region of residence .....	4
1.2 Weekly COVID-19 case numbers and number of cases per 1000 people since 15 December 2021, by region of residence and overall for Tasmanian residents .....	5
1.3 Weekly COVID-19 case numbers and number of cases per 1000 people, by Local Government Area. ....	6
1.4 Weekly number of COVID-19 cases per 1000 people, presented as a metric, by Local Government Area.....	8
1.5 Weekly COVID-19 case numbers and number of cases per 1000 people, by age group .....	9
1.6 Weekly number of COVID-19 cases per 1000 people notified in Tasmania since 15 December 2021, by age group .....	10
1.7 Weekly COVID-19 case numbers in Aboriginal and Torres Strait Islander people ..	11
1.8 Weekly COVID-19 case numbers by method of diagnosis .....	12
1.9 Number of COVID-19 cases in Tasmania per day since 15 December 2021, by method of diagnosis (PCR and rapid antigen tests) .....	13
<b>Section 2: PCR Testing in Tasmania</b> .....	<b>14</b>
2.1 PCR positivity percentage by region of residence .....	14
2.2 Weekly percentage of PCR tests positive for COVID-19 since 15 December 2021, by region of residence and overall for Tasmanian residents .....	15
2.3 PCR testing by age group.....	16
2.4 PCR testing by region of residence .....	17
2.5 Weekly number of PCR tests per 1000 people since 15 December 2021, by region of residence and overall for Tasmanian residents .....	18
2.6 PCR testing by Local Government Area .....	19
<b>Section 3: Clinical Severity and Deaths in Tasmania</b> .....	<b>21</b>
3.1 Clinical severity and deaths in reported COVID-19 cases by reporting week .....	21
3.2 Clinical severity and deaths in reported COVID-19 cases by age group .....	22
3.3 Clinical severity and deaths in reported COVID-19 cases by vaccination status .....	23
3.4 Deaths in reported COVID-19 cases by region of residence .....	24

# Section 1: Total COVID-19 Cases and Number of Cases per 1000 People in Tasmania

## 1.1 Weekly COVID-19 case numbers and number of cases per 1000 people, by region of residence

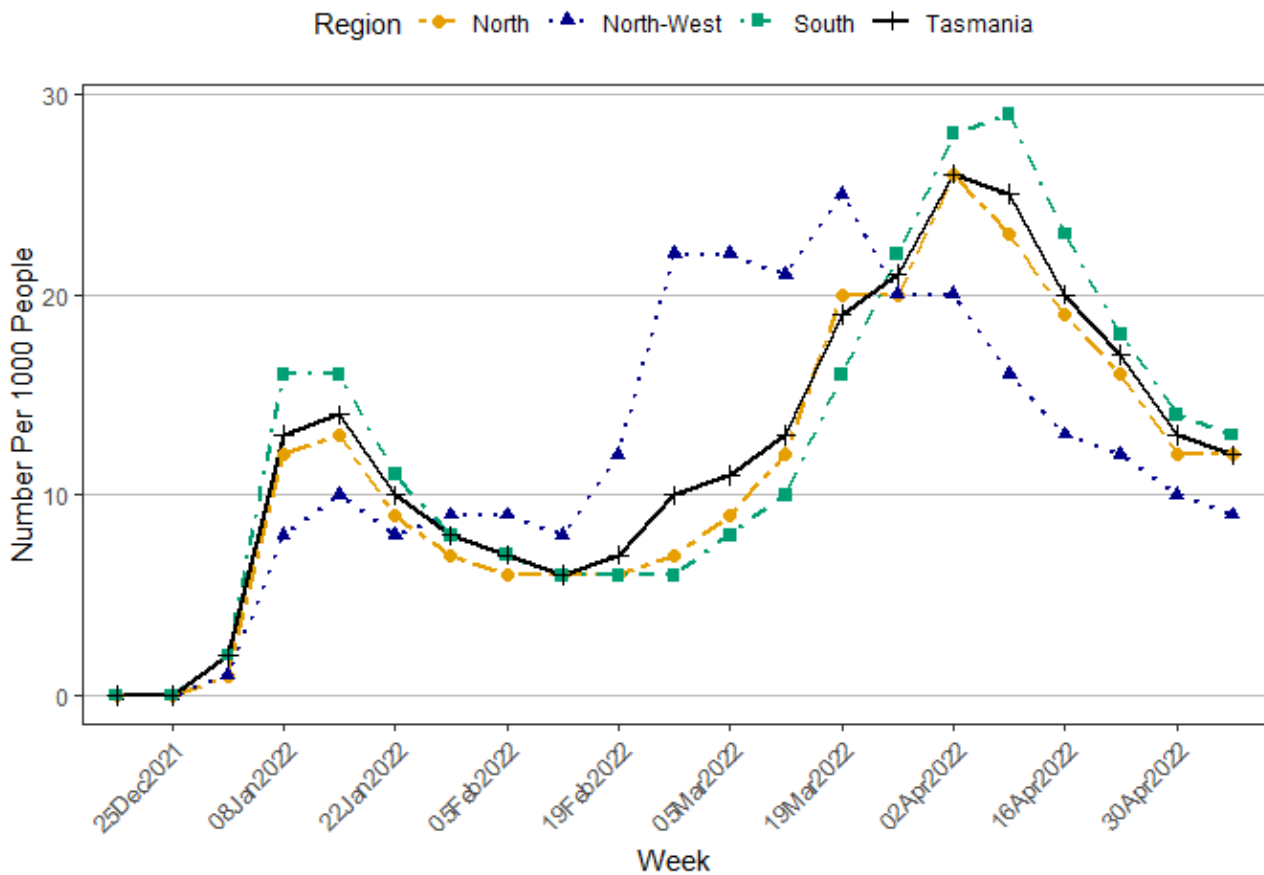
**Table 1:** COVID-19 cases and number of cases per 1000 people per week for each of the last 4-weeks, and total cases notified since 15 December 2021, by region of residence in Tasmania.

	16 Apr 2022		23 Apr 2022		30 Apr 2022		07 May 2022		Total Since 15 December 2021	
Region of Residence	Cases	Rate	Cases	Rate	Cases	Rate	Cases	Rate	Total Cases	Overall Rate
<b>North</b>	2,892	19	2,462	16	1,783	12	1,758	12	<b>35,283</b>	<b>236</b>
<b>North-West</b>	1,433	13	1,352	12	1,142	10	1,011	9	<b>28,800</b>	<b>253</b>
<b>South</b>	6,483	23	5,103	18	3,825	14	3,727	13	<b>72,937</b>	<b>263</b>
<b>Unknown Region</b>	34	-	36	-	34	-	18	-	<b>334</b>	<b>-</b>
<b>Tasmania Total</b>	<b>10,842</b>	<b>20</b>	<b>8,953</b>	<b>17</b>	<b>6,784</b>	<b>13</b>	<b>6,514</b>	<b>12</b>	<b>137,354</b>	<b>254</b>

\*Region is based on residential address provided at time of PCR testing or reporting of a positive RAT. All rates presented are calculated as cases per 1000 population. There have been an additional 5917 cases with an interstate or overseas postcode, with 356 occurring the latest reporting week.

- From 15 December 2021 to 7 May 2022, a total of 137,354 COVID-19 cases were reported in Tasmania.
- Of these, 35,283 cases resided in the North, 28,800 cases resided in the North-West and 72,937 cases resided in the South.

## 1.2 Weekly COVID-19 case numbers and number of cases per 1000 people since 15 December 2021, by region of residence and overall for Tasmanian residents



**Figure 1:** Number of weekly COVID-19 cases per 1000 people (rate) since 15 December 2021, by region of residence and overall for Tasmanian residents.

- From 15 December 2021 to 7 May 2022, the total number of cases per 1000 people in Tasmania was 254.
- From 15 December 2021 to 7 May 2022, the region with the highest overall number of cases per 1000 people was the South with 263.
- From 30 April 2022 to 7 May 2022, the weekly number of cases per 1000 people in Tasmania decreased slightly from 13 to 12.
- From 30 April 2022 to 7 May 2022, the weekly number of cases per 1000 people in the North remained stable at 12.
- From 30 April 2022 to 7 May 2022, the weekly number of cases per 1000 people in the North-West decreased from 10 to 9.

## 1.3 Weekly COVID-19 case numbers and number of cases per 1000 people, by Local Government Area.

**Table 2:** COVID-19 cases and number of cases per 1000 people notified per week in Tasmania for each of the last 4-weeks, and total cases notified since 15 December 2021, by Local Government Area (LGA)\*.

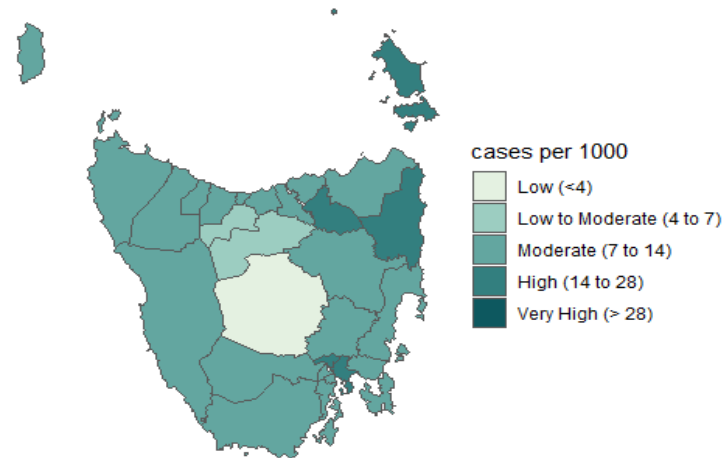
		16 Apr 2022		23 Apr 2022		30 Apr 2022		07 May 2022		Total Since 15 December 2021	
LGA	Population	Cases	Rate	Cases	Rate	Cases	Rate	Cases	Rate	Total Cases	Overall Rate
<b>Break O'Day</b>	6346	98	15	138	22	100	16	78	12	<b>1,253</b>	<b>197</b>
<b>Brighton</b>	18123	652	36	468	26	345	19	268	15	<b>7,219</b>	<b>398</b>
<b>Burnie</b>	19701	274	14	262	13	240	12	184	9	<b>5,674</b>	<b>288</b>
<b>Central Coast</b>	22157	295	13	281	13	250	11	222	10	<b>5,491</b>	<b>248</b>
<b>Central Highlands</b>	2166	11	5	6	3	6	3	5	2	<b>122</b>	<b>56</b>
<b>Circular Head</b>	8152	100	12	113	14	108	13	69	8	<b>1,688</b>	<b>207</b>
<b>Clarence</b>	58729	1,459	25	1,105	19	900	15	863	15	<b>16,131</b>	<b>275</b>
<b>Derwent Valley</b>	10518	270	26	218	21	137	13	102	10	<b>2,594</b>	<b>247</b>
<b>Devonport</b>	25747	312	12	284	11	229	9	239	9	<b>7,684</b>	<b>298</b>
<b>Dorset</b>	6685	167	25	112	17	55	8	79	12	<b>1,329</b>	<b>199</b>
<b>Flinders</b>	1004	10	10	5	5	26	26	13	13	<b>175</b>	<b>174</b>
<b>George Town</b>	7117	167	23	121	17	83	12	64	9	<b>1,493</b>	<b>210</b>
<b>Glamorgan-Spring Bay</b>	4750	52	11	49	10	31	7	22	5	<b>607</b>	<b>128</b>
<b>Glenorchy</b>	47963	1,217	25	920	19	642	13	632	13	<b>13,787</b>	<b>287</b>
<b>Hobart</b>	55250	1,079	20	958	17	741	13	717	13	<b>13,831</b>	<b>250</b>
<b>Huon Valley</b>	17966	353	20	224	12	206	11	192	11	<b>3,499</b>	<b>195</b>
<b>Kentish</b>	6393	53	8	48	8	35	5	42	7	<b>1,238</b>	<b>194</b>
<b>King Island</b>	1612	5	3	7	4	14	9	12	7	<b>378</b>	<b>234</b>
<b>Kingborough</b>	38628	890	23	746	19	518	13	654	17	<b>9,816</b>	<b>254</b>
<b>Latrobe</b>	11961	146	12	146	12	92	8	97	8	<b>2,767</b>	<b>231</b>
<b>Launceston</b>	68813	1,633	24	1,409	20	1,076	16	1,057	15	<b>21,124</b>	<b>307</b>
<b>Meander Valley</b>	20037	249	12	220	11	108	5	146	7	<b>3,126</b>	<b>156</b>

		16 Apr 2022		23 Apr 2022		30 Apr 2022		07 May 2022		Total Since 15 December 2021	
LGA	Population	Cases	Rate	Cases	Rate	Cases	Rate	Cases	Rate	Total Cases	Overall Rate
<b>Northern Midlands</b>	13598	251	18	196	14	135	10	145	11	<b>3,230</b>	<b>238</b>
<b>Sorell</b>	16030	393	25	272	17	210	13	191	12	<b>4,092</b>	<b>255</b>
<b>Southern Midlands</b>	6400	64	10	84	13	54	8	43	7	<b>811</b>	<b>127</b>
<b>Tasman</b>	2479	39	16	48	19	32	13	35	14	<b>388</b>	<b>157</b>
<b>Waratah-Wynyard</b>	13900	166	12	156	11	147	11	130	9	<b>2,998</b>	<b>216</b>
<b>West Coast</b>	4132	82	20	55	13	27	7	16	4	<b>880</b>	<b>213</b>
<b>West Tamar</b>	24423	317	13	261	11	199	8	174	7	<b>3,543</b>	<b>145</b>

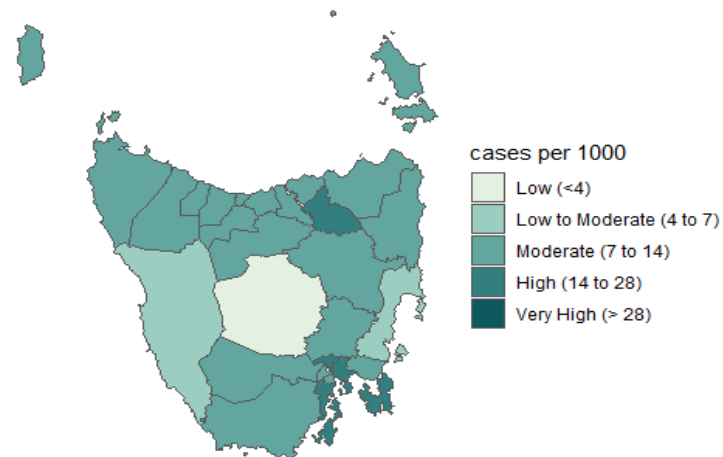
\*LGA is based on residential address provided at time of PCR testing or reporting of a positive RAT. This table excludes those who reported their region of residence to be interstate or overseas. All rates presented are calculated as cases per 1000 population.

## 1.4 Weekly number of COVID-19 cases per 1000 people, presented as a metric, by Local Government Area

Case Rate - 24Apr2022 to 30Apr2022



Case Rate - 01May2022 to 07May2022



**Figure 2:** Weekly number of COVID-19 cases per 1000 people, presented as a metric from low (<4 cases) to very high (>28 cases) for the previous two weeks, by Local Government Area in Tasmania.

- From 15 December 2021 to 7 May 2022, the Local Government Area with the highest total number of cases per 1000 people was Brighton with 398 cases, followed by Launceston with 307 cases.
- From 30 April 2022 to 7 May 2022, the weekly number of cases per 1000 people decreased in all Local Government Areas except for Dorset, Kentish, Kingborough, Meander Valley, Northern Midlands and Tasman where they increased; and Clarence, Devonport, Glenorchy, Hobart, Huon Valley and Latrobe where they remained stable.



## 1.5 Weekly COVID-19 case numbers and number of cases per 1000 people, by age group

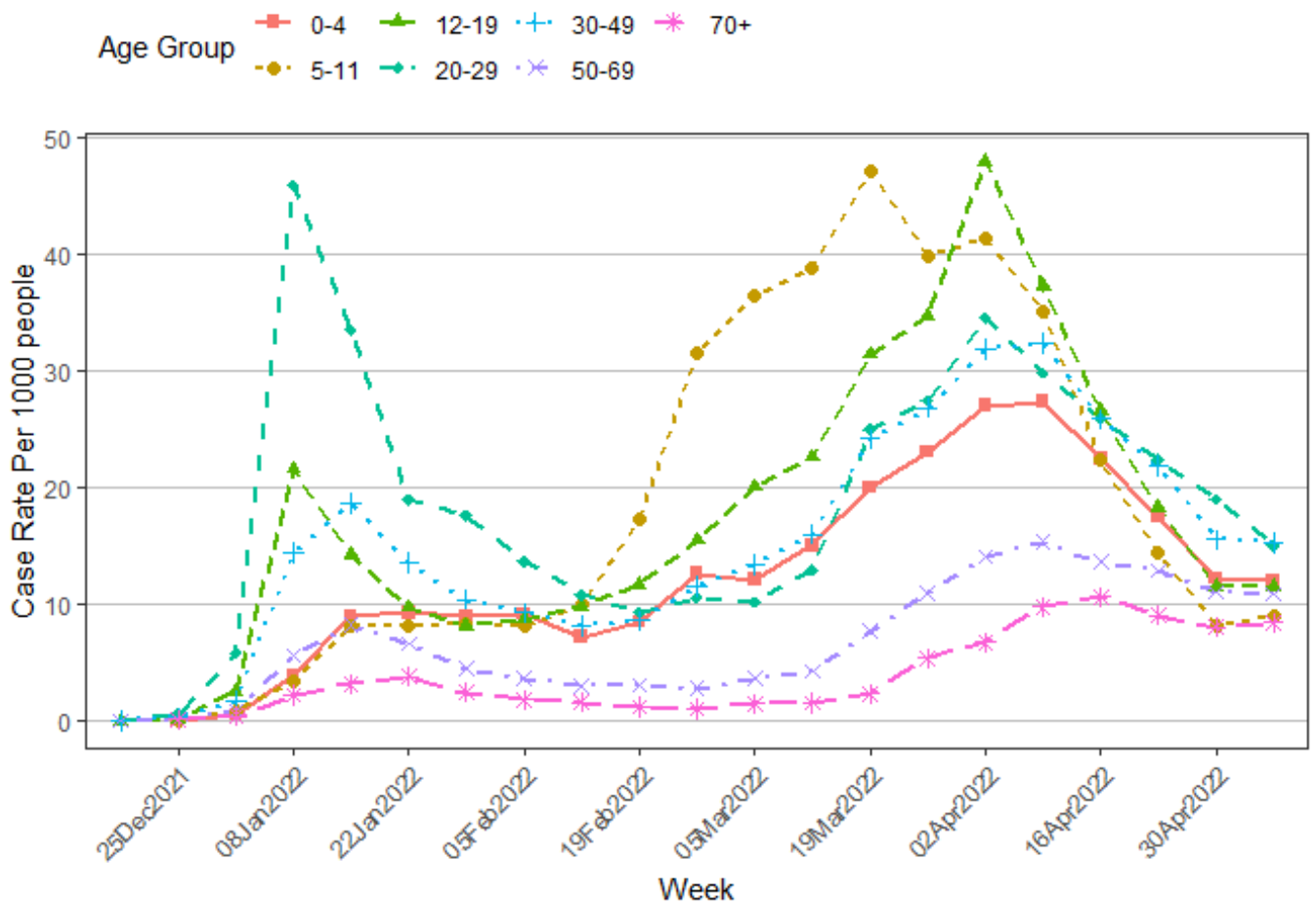
**Table 3:** COVID-19 cases and number of cases per 1000 people per week (rate) notified in Tasmania for each of the last 4-weeks, and total number and overall number of cases per 1000 people (rate) since 15 December 2021, by age group.

		16 Apr 2022		23 Apr 2022		30 Apr 2022		07 May 2022		Total Since 15 December 2021	
Age Group (years)	Population	Cases	Rate	Cases	Rate	Cases	Rate	Cases	Rate	Total Cases	Overall Rate
<b>0-4</b>	29,267	658	22	511	17	357	12	352	12	<b>7,551</b>	<b>258</b>
<b>5-11</b>	45,033	1,007	22	649	14	371	8	405	9	<b>17,483</b>	<b>388</b>
<b>12-15</b>	26,308	806	31	520	20	272	10	307	12	<b>9,615</b>	<b>365</b>
<b>16-19</b>	24,713	552	22	415	17	315	13	282	11	<b>8,944</b>	<b>362</b>
<b>20-29</b>	65,756	1,701	26	1,474	22	1,249	19	988	15	<b>25,576</b>	<b>389</b>
<b>30-39</b>	65,410	1,858	28	1,616	25	1,126	17	1,089	17	<b>24,052</b>	<b>368</b>
<b>40-49</b>	64,257	1,497	23	1,224	19	893	14	890	14	<b>17,436</b>	<b>271</b>
<b>50-59</b>	72,013	1,122	16	1,037	14	881	12	897	12	<b>12,387</b>	<b>172</b>
<b>60-69</b>	70,868	822	12	809	11	699	10	655	9	<b>8,041</b>	<b>113</b>
<b>70-79</b>	50,893	523	10	445	9	404	8	413	8	<b>4,142</b>	<b>81</b>
<b>80-84</b>	13,647	141	10	134	10	99	7	135	10	<b>1,053</b>	<b>77</b>
<b>85+</b>	12,615	155	12	119	9	118	9	101	8	<b>1,074</b>	<b>85</b>
<b>Total</b>	<b>540,780</b>	<b>10,842</b>	<b>20</b>	<b>8,953</b>	<b>17</b>	<b>6,784</b>	<b>13</b>	<b>6,514</b>	<b>12</b>	<b>137,354</b>	<b>254</b>

Age group is based on age or date of birth provided at time of PCR testing or reporting of a positive RAT. People who have not provided a valid age or date of birth have been excluded. All rates presented are calculated as cases per 1000 people. Please note that this table excludes those who reported their region of residence to be interstate or overseas. Only Tasmanians are presented in this table. There have been an additional 5917 cases with an interstate or overseas postcode, with 356 occurring the latest reporting week.

- From 15 December 2021 to 7 May 2022, young adults aged 20-29 years had the highest total number of cases per 1000 people with 389 cases, followed by children aged 5-11 years with 388 cases.
- In the week ending 7 May 2022, adults aged 30-39 years had the highest weekly number of cases per 1000 people with 17 cases, followed by those aged 20-29 with 15 cases.

## 1.6 Weekly number of COVID-19 cases per 1000 people notified in Tasmania since 15 December 2021, by age group



**Figure 3:** Weekly number of COVID-19 cases per 1000 people (rate) notified in Tasmania since 15 December 2021, by age group.

- In the week ending 7 May 2022, the weekly number of cases per 1000 people increased in children aged 5-11 and 12-15 years, and in older adults aged 80-84 years, compared to the previous week.
- In the week ending 7 May 2022, the weekly number of cases per 1000 people decreased in those aged 16-19, 20-29, 60-69, and 85 years and older, compared to the previous week.
- In the week ending 7 May 2022, the weekly number of cases per 1000 people remained stable in children aged 0-4 years, and in adults aged 30-39, 40-49, 50-59 and 70-79 years, compared to the previous week.

## 1.7 Weekly COVID-19 case numbers in Aboriginal and Torres Strait Islander people

**Table 4:** Weekly number of COVID-19 cases notified in Tasmania for each of the last 4-weeks, and total number of cases since 15 December 2021, by reported Aboriginal and Torres Strait Islander status.

Reported Indigenous Status	16 Apr 2022	23 Apr 2022	30 Apr 2022	07 May 2022	Total since 15 December 2021
People who identify as Aboriginal and/or Torres Strait Islander	772 (7%)	593 (7%)	346 (5%)	332 (5%)	8034 (6%)
Non-Indigenous	9291 (86%)	7687 (86%)	5900 (87%)	5543 (85%)	103995 (76%)
Not Stated	779 (7%)	673 (8%)	538 (8%)	639 (10%)	25325 (18%)
<b>Total</b>	<b>10842 (100%)</b>	<b>8953 (100%)</b>	<b>6784 (100%)</b>	<b>6514 (100%)</b>	<b>137354 (100%)</b>

\*Please note that this table excludes those who reported their region of residence to be interstate or overseas. Region is based on residential postcode provided to Public Health Services. Percentages are based on total cases per region per week. Percentages have been rounded to the nearest whole number and may not add up to 100 per cent.

- From 15 December 2021 to 7 May 2022, 8,034 people who identify as Aboriginal and/or Torres Strait Islander people were diagnosed with COVID-19. This comprised 6 per cent of overall cases diagnosed in Tasmania.
- In the week ending 7 May 2022, 332 people who identify as Aboriginal and/or Torres Strait Islander people were diagnosed with COVID-19 in Tasmania.

## 1.8 Weekly COVID-19 case numbers by method of diagnosis

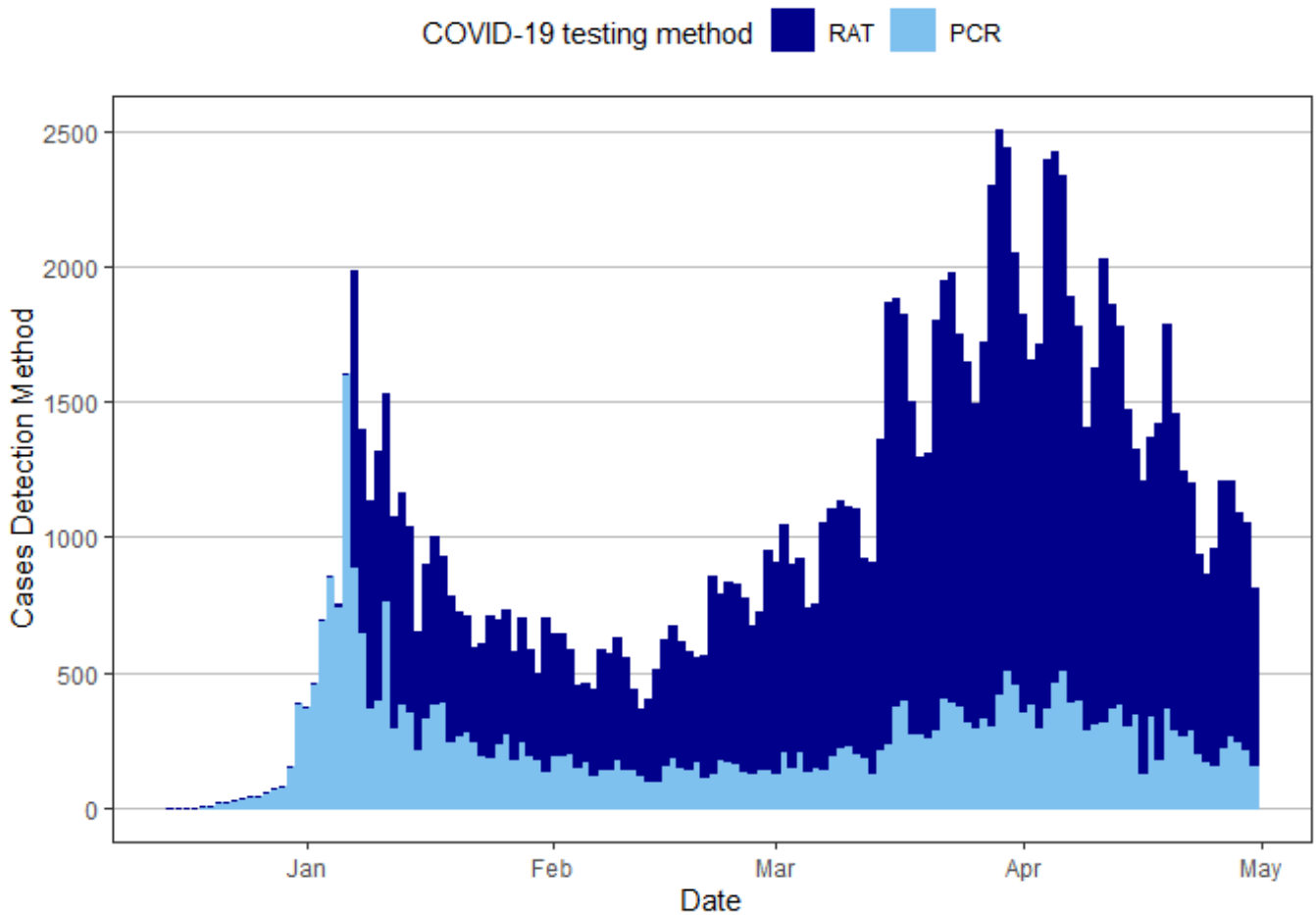
**Table 5:** Weekly number of people diagnosed with COVID-19 in Tasmania from 15 December 2021 to 7 May 2022, by PCR and rapid antigen testing (RAT).

Reporting Week	PCR	RAT	Total Recorded Cases
18 Dec 2021	7 (100%)	- (0%)	7
25 Dec 2021	157 (100%)	- (0%)	157
01 Jan 2022	1165 (100%)	0 (0%)	1,165
08 Jan 2022	5917 (76%)	1839 (24%)	7,756
15 Jan 2022	2813 (36%)	5106 (64%)	7,919
22 Jan 2022	2157 (38%)	3486 (62%)	5,643
29 Jan 2022	1537 (33%)	3065 (67%)	4,602
05 Feb 2022	1241 (31%)	2740 (69%)	3,981
12 Feb 2022	1014 (28%)	2574 (72%)	3,588
19 Feb 2022	1030 (26%)	2922 (74%)	3,952
26 Feb 2022	1032 (19%)	4299 (81%)	5,331
05 Mar 2022	1145 (18%)	5060 (82%)	6,205
12 Mar 2022	1356 (19%)	5833 (81%)	7,189
19 Mar 2022	1927 (18%)	8724 (82%)	10,651
26 Mar 2022	2353 (20%)	9582 (80%)	11,935
02 Apr 2022	2787 (19%)	11712 (81%)	14,499
09 Apr 2022	2739 (20%)	11205 (80%)	13,944
16 Apr 2022	2188 (19%)	9115 (81%)	11,303
23 Apr 2022	1972 (21%)	7444 (79%)	9,416
30 Apr 2022	1498 (21%)	5658 (79%)	7,156
07 May 2022	1339 (19%)	5531 (81%)	6,870

\*Case numbers include positive notifications to Public Health Services from pathology laboratories providing PCR results, and self-reported rapid antigen tests (RATs). Where both a PCR and RAT are notified to Public Health Services for the same individual, the PCR test is reported.

- Since 9 January 2022, rapid antigen testing (RAT) has been the predominant diagnostic method in Tasmania and currently comprises 81 per cent of weekly positive COVID-19 notifications to Public Health Services.

## 1.9 Number of COVID-19 cases in Tasmania per day since 15 December 2021, by method of diagnosis (PCR and rapid antigen tests)



**Figure 4:** Number of COVID-19 cases notified in Tasmania per day from 15 December 2021 to 30 April 2022, by method of diagnosis (PCR and rapid antigen tests).

- From 2020 to early January 2022, PCR testing was the main method of testing used for the diagnosis of COVID-19. Since rapid antigen tests (RATs) became available, RATs are now the dominant testing method for COVID-19 in Tasmania.

## Section 2: PCR Testing in Tasmania

### 2.1 PCR positivity percentage by region of residence

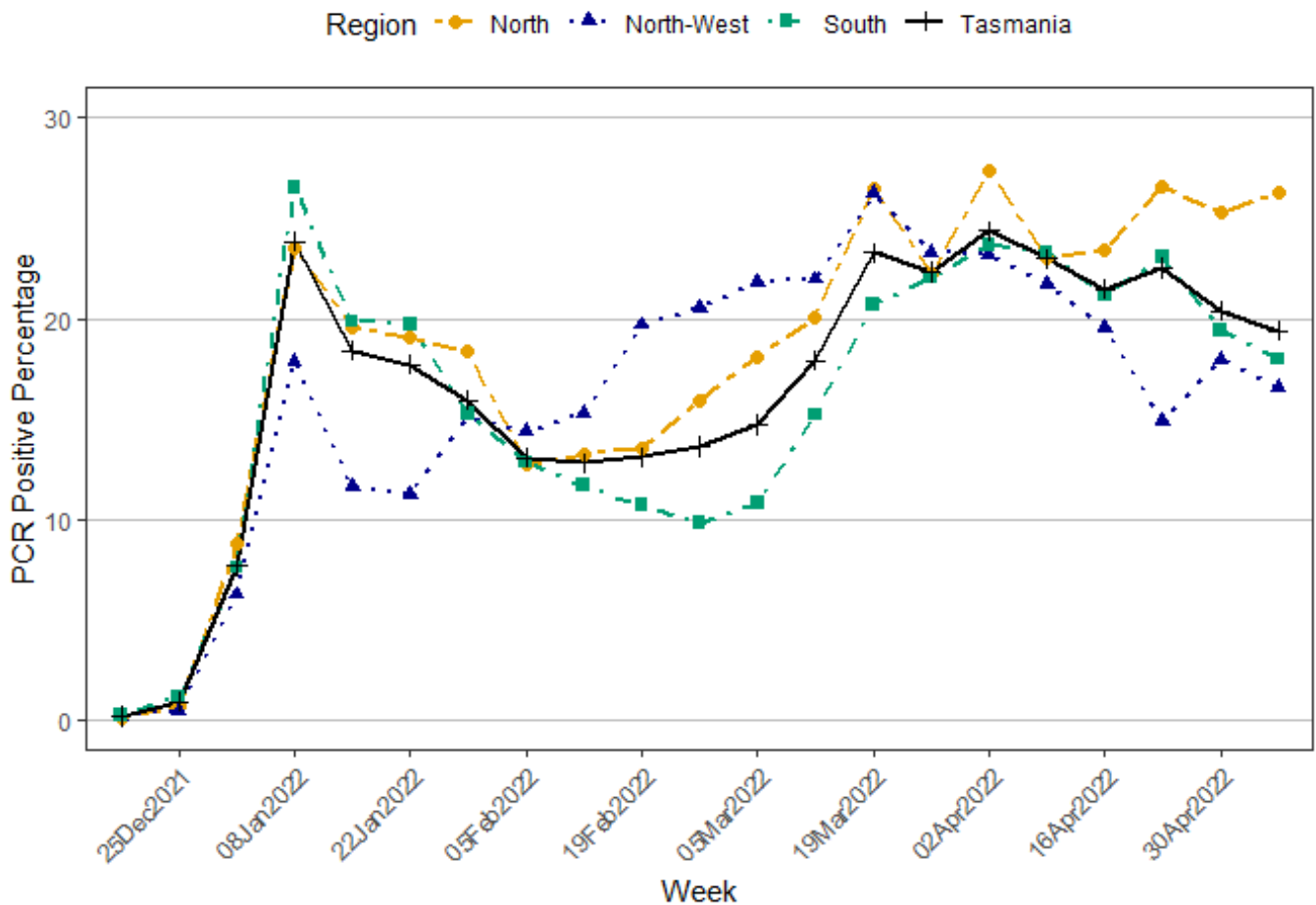
**Table 6:** Number of COVID-19 PCR tests (both positive and negative) and percentage of PCR tests positive for COVID-19 (per cent positive) for each of the last 4-weeks and since 15 December 2021, by region of residence in Tasmania.

	16 Apr 2022		23 Apr 2022		30 Apr 2022		07 May 2022		Since 15 December 2021	
Region of Residence	Tests	% Pos	Tests	% Pos	Tests	% Pos	Tests	% Pos	Total Tests	Overall % Pos
North	2,616	23	2,021	27	1,509	25	1,290	26	55,841	18
North-West	1,387	20	1,468	15	1,191	18	1,251	17	39,357	16
South	6,225	21	4,906	23	4,719	19	4,247	18	128,726	16
Unknown Region	142	18	132	25	109	20	123	26	3,744	15
<b>Tasmania</b>	<b>10,370</b>	<b>21</b>	<b>8,527</b>	<b>23</b>	<b>7,528</b>	<b>20</b>	<b>6,911</b>	<b>19</b>	<b>227,668</b>	<b>17</b>

\*Please note that this table excludes those who reported their region of residence to be interstate or overseas. Region is based on residential address provided at time of PCR testing.

- From 15 December 2021 to 7 May 2022, a total of 227,668 PCR tests were performed in Tasmania. Of these, 17 per cent tested positive for COVID-19.
- In the week ending 7 May 2022, 6911 PCR tests were performed in Tasmania. Of these, 19 per cent tested positive for COVID-19, a reduction from the previous 3 weeks during which 20-23 per cent positive of PCR tests were positive

## 2.2 Weekly percentage of PCR tests positive for COVID-19 since 15 December 2021, by region of residence and overall for Tasmanian residents



**Figure 5:** Weekly percentage of PCR tests positive for COVID-19 from 15 December 2021 to 7 May 2022, by region of residence and overall for Tasmanian residents.

- In the week ending 7 May 2022, the North had the highest PCR test positivity in the state with 26 per cent of PCR tests performed testing positive for COVID-19.
- In the week ending 7 May 2022, the percentage of PCR tests that tested positive for COVID-19 in the North-West decreased from 18 to 17 per cent, compared to the previous week.
- In the week ending 7 May 2022, the percentage of PCR tests that tested positive for COVID-19 in the South decreased from 19 to 18 per cent, compared to the previous week.

## 2.3 PCR testing by age group

**Table 7:** Number of PCR tests performed in Tasmania and number of PCR tests per 1000 people per week for each of the last 4-weeks and since 15 December 2021, by age group.

		16 Apr 2022		23 Apr 2022		30 Apr 2022		07 May 2022		Total Since 15 December 2021	
Age Group (years)	Population	Tests	Rate	Tests	Rate	Tests	Rate	Tests	Rate	Total Tests	Overall Rate
0-4	29,267	718	25	545	19	445	15	413	14	11,633	397
5-11	45,033	541	12	316	7	222	5	159	4	10,818	240
12-15	26,308	262	10	172	7	103	4	135	5	6,336	241
16-19	24,713	272	11	211	9	176	7	203	8	9,526	385
20-29	65,756	1,332	20	1,239	19	1,137	17	930	14	42,224	642
30-39	65,410	1,568	24	1,266	19	1,066	16	949	15	38,985	596
40-49	64,257	1,102	17	934	15	778	12	717	11	26,914	419
50-59	72,013	931	13	879	12	873	12	764	11	24,557	341
60-69	70,868	897	13	820	12	808	11	773	11	19,933	281
70-79	50,893	976	19	775	15	744	15	760	15	16,121	317
80-84	13,647	459	34	397	29	370	27	351	26	6,794	498
85+	12,615	1,312	104	973	77	806	64	757	60	13,827	1096
<b>Total</b>	<b>540,780</b>	<b>10,370</b>	<b>19</b>	<b>8,527</b>	<b>16</b>	<b>7,528</b>	<b>14</b>	<b>6,911</b>	<b>13</b>	<b>227,668</b>	<b>421</b>

\*Please note that this table excludes those who reported their region of residence to be interstate or overseas. Age group is based on the age provided at time of PCR testing. All rates presented are calculated as number of PCR tests per 1000 population.

- From 15 December 2021 to 7 May 2022, a total of 227,668 PCR tests were performed in Tasmania.
- From 15 December 2022 to 7 May 2022, the total number of PCR tests per 1000 people in Tasmania was 421.
- From 15 December 2022 to 7 May 2022, the overall number of PCR tests per 1000 people was highest in adults aged 85 years and older with 1096 PCR tests followed by young adults aged 20-29 years with 642.
- In the week ending 7 May 2022, 6911 PCR tests were performed in Tasmania.
- From 30 April 2022 to 7 May 2022, the weekly number of PCR tests per 1000 people in Tasmania decreased slightly from 14 to 13.
- In the week ending 7 May 2022, the weekly number of PCR tests per 1000 people was highest in adults aged 85 years and older with 60, followed by adults aged 80-84 with 26.



## 2.4 PCR testing by region of residence

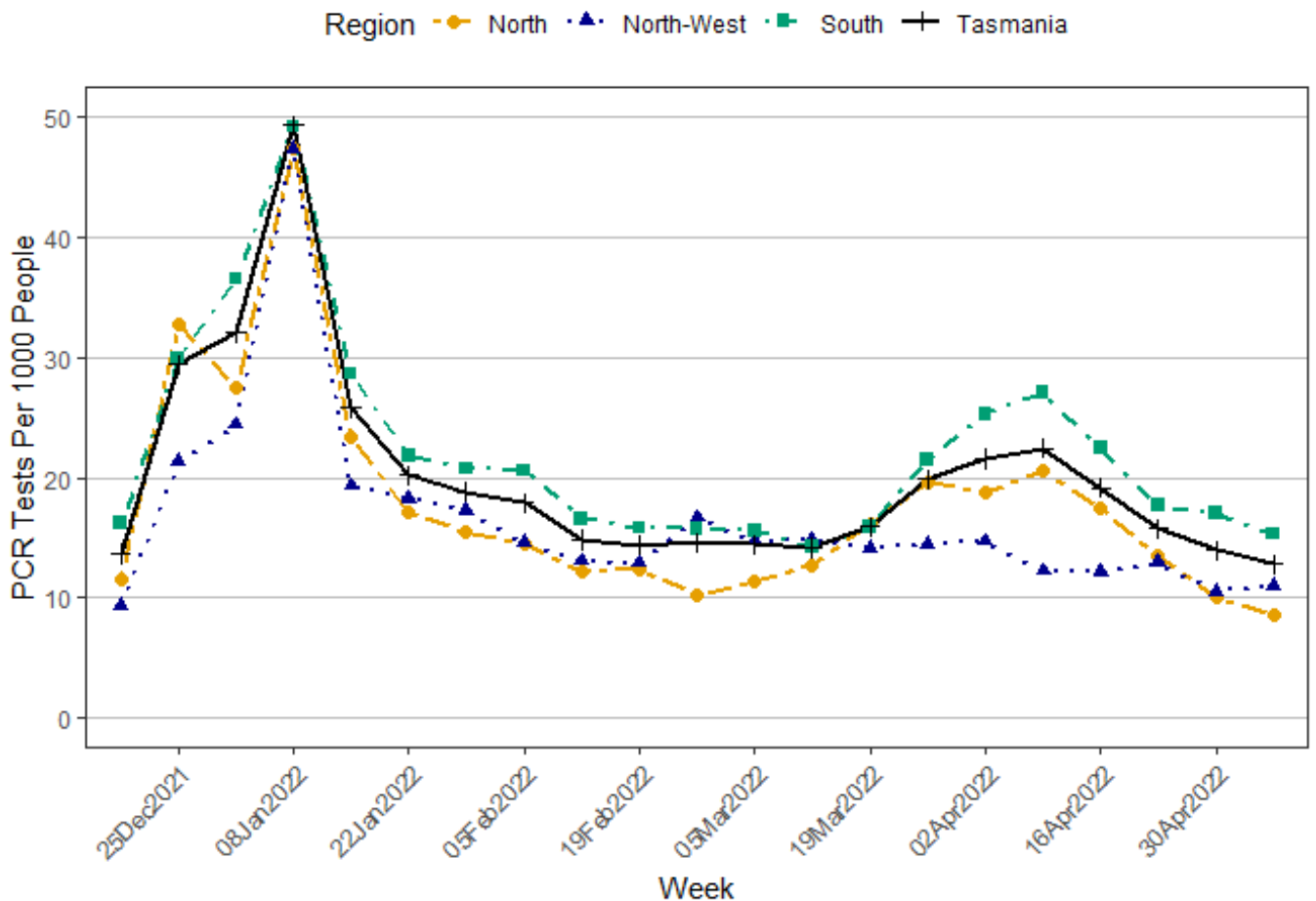
**Table 8:** Number of PCR tests performed and number of PCR tests per 1000 people per week for each of the last 4-weeks and since 15 December 2021, by region of residence in Tasmania.

	16 Apr 2022		23 Apr 2022		30 Apr 2022		07 May 2022		Total Since 15 December 2021	
Region of Residence	Tests	Rate	Tests	Rate	Tests	Rate	Tests	Rate	Total Tests	Overall Rate
North	2,616	17	2,021	14	1,509	10	1,290	9	55,841	374
North-West	1,387	12	1,468	13	1,191	10	1,251	11	39,357	346
South	6,225	22	4,906	18	4,719	17	4,247	15	128,726	464
Unknown Region	142	-	132	-	109	-	123	-	3,744	-
<b>Tasmania Total</b>	<b>10,370</b>	<b>19</b>	<b>8,527</b>	<b>16</b>	<b>7,528</b>	<b>14</b>	<b>6,911</b>	<b>13</b>	<b>227,668</b>	<b>421</b>

\*Please note that this table excludes those who reported their region of residence to be interstate or overseas. Region of residence is based on residential address provided at the time of PCR testing. All rates presented are calculated as PCR tests per 1000 people.

- From 15 December 2021 to 7 May 2022, the total number of PCR tests per 1000 people in Tasmania was 421.
- From 15 December 2021 to 7 May 2022, the number of PCR tests per 1000 people was highest in the South with 464, followed by the North with 374 and the North-West with 346.
- In the week ending 7 May 2022, the weekly number of PCR tests per 1000 people was highest in the South with 15, followed by the North-West with 11 and North with 9.

## 2.5 Weekly number of PCR tests per 1000 people since 15 December 2021, by region of residence and overall for Tasmanian residents



**Figure 6:** Weekly number of PCR tests per 1000 people from 15 December 2021 to 7 May 2022, by region of residence and overall for Tasmanian residents.

- From 30 April 2022 to 7 May 2022, the total weekly number of PCR tests per 1000 people in Tasmania decreased from 14 to 13.
- From 30 April 2022 to 7 May 2022, the weekly number of PCR tests per 1000 people in the North decreased from 10 to 9.
- From 30 April 2022 to 7 May 2022, the weekly number of PCR tests per 1000 people in the North-West increased from 10 to 11.
- From 30 April 2022 to 7 May 2022, the weekly number of PCR tests per 1000 people in the South decreased from 17 to 15.

## 2.6 PCR testing by Local Government Area

**Table 9:** Number of PCR tests performed and number of PCR tests per 1000 people per week for each of the last 4-weeks and since 15 December 2021, by Local Government Area (LGA) in Tasmania.

		16 Apr 2022		23 Apr 2022		30 Apr 2022		07 May 2022		Total Since 15 December 2021	
LGA	Population	Tests	Rate	Tests	Rate	Tests	Rate	Tests	Rate	Total Tests	Overall Rate
<b>Break O'Day</b>	6,346	39	6	27	4	36	6	41	6	<b>1,192</b>	<b>188</b>
<b>Brighton</b>	18,123	305	17	257	14	222	12	198	11	<b>7,324</b>	<b>404</b>
<b>Burnie</b>	19,701	194	10	330	17	190	10	151	8	<b>7,396</b>	<b>375</b>
<b>Central Coast</b>	22,157	222	10	255	12	261	12	223	10	<b>7,517</b>	<b>339</b>
<b>Central Highlands</b>	2,166	22	10	19	9	13	6	7	3	<b>495</b>	<b>229</b>
<b>Circular Head</b>	8,152	39	5	36	4	41	5	29	4	<b>1,452</b>	<b>178</b>
<b>Clarence</b>	58,729	1,764	30	1,323	23	1,306	22	1,211	21	<b>28,812</b>	<b>491</b>
<b>Derwent Valley</b>	10,518	264	25	148	14	106	10	79	8	<b>3,413</b>	<b>324</b>
<b>Devonport</b>	25,747	606	24	508	20	385	15	481	19	<b>11,848</b>	<b>460</b>
<b>Dorset</b>	6,685	47	7	48	7	32	5	25	4	<b>1,489</b>	<b>223</b>
<b>Flinders</b>	1,004	1	1	2	2	-	-	2	2	<b>138</b>	<b>137</b>
<b>George Town</b>	7,117	130	18	60	8	87	12	62	9	<b>2,044</b>	<b>287</b>
<b>Glamorgan-Spring Bay</b>	4,750	23	5	27	6	28	6	32	7	<b>1,032</b>	<b>217</b>
<b>Glenorchy</b>	47,963	935	19	797	17	913	19	826	17	<b>24,099</b>	<b>502</b>
<b>Hobart</b>	55,250	1,476	27	1,238	22	1,085	20	953	17	<b>33,526</b>	<b>607</b>
<b>Huon Valley</b>	17,966	211	12	146	8	145	8	118	7	<b>5,035</b>	<b>280</b>
<b>Kentish</b>	6,393	46	7	41	6	59	9	38	6	<b>1,727</b>	<b>270</b>
<b>King Island</b>	1,612	5	3	8	5	5	3	2	1	<b>619</b>	<b>384</b>
<b>Kingborough</b>	38,628	846	22	663	17	636	16	583	15	<b>17,115</b>	<b>443</b>
<b>Latrobe</b>	11,961	153	13	148	12	106	9	129	11	<b>4,202</b>	<b>351</b>
<b>Launceston</b>	68,813	1,690	25	1,217	18	911	13	731	11	<b>34,335</b>	<b>499</b>
<b>Meander Valley</b>	20,037	246	12	182	9	141	7	122	6	<b>5,073</b>	<b>253</b>

		16 Apr 2022		23 Apr 2022		30 Apr 2022		07 May 2022		Total Since 15 December 2021	
LGA	Population	Tests	Rate	Tests	Rate	Tests	Rate	Tests	Rate	Total Tests	Overall Rate
<b>Northern Midlands</b>	13,598	197	14	134	10	119	9	125	9	<b>4,170</b>	<b>307</b>
<b>Sorell</b>	16,030	270	17	199	12	186	12	195	12	<b>5,638</b>	<b>352</b>
<b>Southern Midlands</b>	6,400	90	14	70	11	64	10	35	5	<b>1,781</b>	<b>278</b>
<b>Tasman</b>	2,479	19	8	19	8	15	6	10	4	<b>456</b>	<b>184</b>
<b>West Coast</b>	4,132	26	6	23	6	23	6	25	6	<b>667</b>	<b>161</b>
<b>West Tamar</b>	24,423	266	11	351	14	183	7	182	7	<b>7,400</b>	<b>303</b>

LGA is based on residential address provided at time of PCR testing or reporting of a positive RAT. All rates presented are calculated as PCR tests per 1000 people. Please note that this table excludes those who reported their region of residence to be interstate or overseas.

- From 15 December 2021 to 7 May 2022, the Local Government Areas with the highest overall number of PCR tests per 1000 people were Clarence, Devonport, Glenorchy, Hobart and Launceston.
- From 30 April 2022 to 7 May 2022, the weekly number of PCR tests per 1000 people decreased in all Local Government Areas except for Devonport, Flinders, Glamorgan-Spring Bay and Latrobe.
- From 30 April 2022 to 7 May 2022, the weekly number of PCR tests per 1000 people remained stable in Break O'Day, Northern Midlands, Sorell, West Coast and West Tamar.

## Section 3: Clinical Severity and Deaths in Tasmania

### 3.1 Clinical severity and deaths in reported COVID-19 cases by reporting week

**Table 10:** Number of cases hospitalised with COVID-19, number of cases hospitalised due to COVID-19, number of cases with COVID-19 admitted to ICU (for any reason), and deaths for which COVID-19 was a cause or contributing factor from 15 December 2021 to 7 May 2022.

Reporting Week	All Hospital Admissions with COVID-19	Hospital Admissions due to COVID-19	Intensive Care Admissions	Deaths
18 Dec 2021	1	-	-	-
25 Dec 2021	-	-	-	-
01 Jan 2022	5	2	-	-
08 Jan 2022	24	13	2	-
15 Jan 2022	45	18	1	-
22 Jan 2022	47	22	6	2
29 Jan 2022	35	16	1	3
05 Feb 2022	27	11	2	2
12 Feb 2022	20	14	-	3
19 Feb 2022	25	11	2	1
26 Feb 2022	24	10	-	1
05 Mar 2022	42	20	6	1
12 Mar 2022	33	16	2	1
19 Mar 2022	59	20	1	1
26 Mar 2022	67	30	1	2
02 Apr 2022	87	34	1	2
09 Apr 2022	85	37	-	3
16 Apr 2022	75	29	-	8
23 Apr 2022	67	25	2	4
30 Apr 2022	66	29	3	7
07 May 2022	62	24	3	5
<b>Total</b>	<b>896</b>	<b>381</b>	<b>33</b>	<b>46</b>

\*This table excludes interstate and overseas residents who were diagnosed and managed for COVID-19 in Tasmania. Only recorded deaths, where the death was caused or contributed to by COVID-19 have been included. Reporting week is based on the earliest admission date for each case. Reason for hospital and/or ICU admission is based on COVID-19 diagnosis at discharge date.

- From 15 December 2021 to 7 May 2022, 896 reported cases were admitted to hospital. Of these, 381 reported cases (43 per cent) were admitted to hospital due to COVID-19.
- From 15 December 2021 to 7 May 2022, 33 reported cases were admitted to ICU.
- From 15 December 2021 to 7 May 2022, 46 reported cases died where COVID-19 caused or contributed to their death.

## 3.2 Clinical severity and deaths in reported COVID-19 cases by age group

**Table 11:** Number of cases hospitalised with COVID-19, number of cases hospitalised due to COVID-19, number of cases with COVID-19 admitted to ICU (for any reason), and deaths for which COVID-19 was a cause or contributing factor from 15 December 2021 to 7 May 2022, by age group.

Age Group (years)	All Hospital Admissions with COVID-19	Hospital Admissions due to COVID-19*	Intensive Care Admissions	Deaths
0-4	58	34	3	-
5-11	16	3	-	-
12-15	13	3	-	-
16-19	14	2	1	-
20-29	98	27	4	-
30-39	92	26	2	-
40-49	69	29	3	1
50-59	84	36	5	2
60-69	123	54	7	11
70-79	146	73	8	9
80-84	80	45	-	5
85+	103	49	-	18
<b>Total</b>	<b>896</b>	<b>381</b>	<b>33</b>	<b>46</b>

\*Age group is based on age provided at time of PCR testing or reporting of a positive RAT. This table includes interstate and overseas residents who were diagnosed and managed for COVID-19 in Tasmania. Only recorded deaths, where the death was caused or contributed to by COVID-19 have been included. Reason for hospital and/or ICU admission is based on COVID-19 diagnosis at discharge date.

- From 15 December 2021 to 7 May 2022, 124 reported cases younger than 50-years of age were hospitalised due to COVID-19. This comprises 33 per cent of all hospitalisations due to COVID-19. Thirteen of these reported cases were admitted to ICU.
- From 15 December 2021 to 7 May 2022, 34 reported cases aged 4-years or younger were hospitalised due to COVID-19. This comprised 9 per cent of all reported cases hospitalised due to COVID-19. Three of these reported cases were admitted to ICU.
- From 15 December 2021 to 7 May 2022, one reported case aged 40-49 years died where COVID-19 caused or contributed to their death.

### 3.3 Clinical severity and deaths in reported COVID-19 cases by vaccination status

**Table 12:** Number of cases hospitalised with COVID-19, number of cases hospitalised due to COVID-19, number of cases with COVID-19 admitted to ICU (for any reason), and deaths for which COVID-19 was a cause or contributing factor from 15 December 2021 to 7 May 2022, by vaccination status.

Number of reported vaccination doses	Reported Cases	All Hospital Admissions with COVID-19	Hospital Admissions due to COVID-19	Intensive Care Admissions	Deaths
<b>0 doses</b>	13,080	191	84	10	14
<b>1 dose</b>	12,754	30	13	1	1
<b>2 or more doses</b>	71,410	641	272	21	25
<b>Not stated</b>	46,025	34	12	1	6
<b>Total</b>	<b>143,269</b>	<b>896</b>	<b>381</b>	<b>33</b>	<b>46</b>

\*This table includes interstate and overseas residents who were diagnosed and managed for COVID-19 in Tasmania. Data should be interpreted with caution as vaccination information is based on self-report at the time of notification of a positive PCR or RAT. Only recorded deaths, where the death was caused or contributed to by COVID-19 have been included. Reason for hospital and/or ICU admission is based on COVID-19 diagnosis at discharge date.

- From 15 December 2021 to 7 May 2022, the case fatality rate in reported cases who were unvaccinated was 0.107 per cent while the case fatality rate in reported cases who had received two or more doses of vaccine was 0.035 per cent.
- From 15 December 2021 to 7 May 2022, the case fatality rate in reported cases who were unvaccinated was three times higher than the case fatality rate in reported cases who had received two or more doses of vaccine.

### 3.4 Deaths in reported COVID-19 cases by region of residence

**Table 13:** Number of deaths for which COVID-19 was a cause or contributing factor, per week for each of the last 4-weeks and since 15 December 2021, by region of residence.

Region	16 Apr 2022	23 Apr 2022	30 Apr 2022	07 May 2022	Total deaths since 15 December 2021
North	2	-	2	-	10
North-West	-	-	2	1	8
South	6	4	3	4	28
<b>Tasmania Total</b>	8	4	7	5	46

\*This table includes interstate and overseas residents who were diagnosed and managed for COVID-19 in Tasmania. Only recorded deaths, where the death was caused or contributed to by COVID-19 have been included. Region is based on residential address provided at time of PCR testing or reporting of a positive RAT. Reason for hospital and/or ICU admission is based on COVID-19 diagnosis at discharge date.

- From 15 December 2021 to 7 May 2022, 46 reported cases died where COVID-19 caused or contributed to their death. Of these, 10 reported cases lived in the North, eight lived in the North-West and 28 lived in the South.
- In the week ending 7 May 2022, five reported cases died where COVID-19 caused or contributed to their death. Of these, one reported case lived in the North-West and four reported cases lived in the South.





Department of **Health**  
GPO Box 125  
Hobart TAS 7001

1300 135 513

[www.health.tas.gov.au](http://www.health.tas.gov.au)