



Report created on 16 April 2022

COVID-19

Weekly Surveillance Report



COVID-19 Weekly Public Facing Report, Tasmania

Public Health Emergency Operations Centre

Report created on 17 April 2022

This report describes weekly and overall trends in COVID-19 case notifications, PCR testing, vaccination status, and clinical severity and deaths from 15 December 2021 to 16 April 2022.

The focus of this report is on cases of COVID-19 notified in Tasmania since the lifting of restrictions to the Tasmanian borders on 15 December 2021. Prior to this date there were 238 cases of COVID-19 reported in Tasmania, with 13 deaths caused by COVID-19 or with COVID-19 as a contributing factor. Of these earlier cases, 232 cases and all 13 deaths were notified in 2020. A further six cases were notified in 2021 prior to 15 December 2021.

Following the border changes on 15 December 2021, COVID-19 was imported from interstate, with subsequent widespread community transmission of COVID-19 in the Tasmanian community.

Caveats to the data: Information presented in this report is based on data available in the Tasmanian Notifiable Diseases Database (TNDD) at the time of reporting and is subject to change. Reporting week is the epidemiological week from Sunday to Saturday. Data are presented for the week ending on the date shown in the column header (e.g. data for the week of 27 February to 5 March have the column header "05March2022"). Rates presented are calculated as number of confirmed cases of COVID-19 per 1000 people and number of PCR tests performed per 1000 people.

Contents

COVID-19 Weekly Public Facing Report, Tasmania	2
Section 1: COVID-19 Cases and Number of Cases per 1000 People in Tasmania	4
1.1 Weekly COVID-19 case numbers, and number of cases per 1000 people (rate), by region	4
1.2 Weekly number of COVID-19 cases per 1000 people since 15 December 2021, by region of residence and overall for Tasmanian residents.....	5
1.3 Weekly COVID-19 case numbers, and number of cases per 1000 people (rate), by Local Government Area	6
1.4 Weekly number of cases per 1000 people, presented as a metric, by Local Government Area in Tasmania.....	8
1.5 Weekly COVID-19 case numbers, and number of cases per 1000 people (rate), by age group.....	9
1.6 Weekly number of COVID-19 cases per 1000 people per week (rate) notified in Tasmania since 15 December 2021, by age group.....	10
1.7 Weekly COVID-19 case numbers in people who identify as Aboriginal and/or Torres Strait Islander people.....	11
1.8 Weekly COVID-19 case numbers by method of diagnosis.....	12
1.9 Weekly number of COVID-19 cases in Tasmania per day from 15 December 2021 to 16 April 2022, by method of diagnosis (PCR and rapid antigen tests).....	13
Section 2: PCR Testing in Tasmania	14
2.1 PCR positivity percentage by region of residence	14
2.2 Weekly percentage of PCR tests positive for COVID-19 from 15 December 2021 to 16 April 2022, by region of residence and overall for Tasmanian residents.....	15
2.3 PCR testing by age group	16
2.4 PCR testing by region of residence	17
2.5 Weekly number of PCR tests per 1000 people since 15 December 2021, by region of residence and overall for Tasmanian residents.....	18
2.6 PCR testing by Local Government Area.....	19
Section 3: Clinical Severity and Deaths in Tasmania.....	21
3.1 Clinical severity and deaths in reported COVID-19 cases, by reporting week.....	21
3.2 Clinical severity and deaths in reported COVID-19 cases, by age group	23
3.3 Clinical severity and deaths in reported COVID-19 cases, by vaccination status	24

Section 1: COVID-19 Cases and Number of Cases per 1000 People in Tasmania

1.1 Weekly COVID-19 case numbers, and number of cases per 1000 people (rate), by region

Table 1: Weekly COVID-19 cases and number of cases per 1000 people (rate) per week for each of the last 4 weeks, and total cases notified since 15 December 2021, by region of residence in Tasmania.

	26Mar2022		02Apr2022		09Apr2022		16Apr2022		Total Since 15 December 2021	
Region of Residence	Cases	Rate	Cases	Rate	Cases	Rate	Cases	Rate	Total Cases	Overall Rate
North	3,041	20	3,855	26	3,446	23	2,890	19	29,282	196
North-West	2,292	20	2,310	20	1,802	16	1,435	13	25,291	222
South	6,145	22	7,815	28	8,103	29	6,495	23	60,305	217
Unknown Region	29	-	40	-	34	-	35	-	248	-
Tasmania Total	11,507	21	14,020	26	13,385	25	10,855	20	115,126	213

*Region is based on residential address provided at time of PCR testing or reporting of a positive RAT. All rates presented are calculated as cases per 1000 people. *Please note that this table excludes those who reported their region of residence to be interstate or overseas. There have been an additional 4725 cases with an interstate or overseas postcode, with 464 occurring the latest reporting week.

- From 15 December 2021 to 16 April 2022, a total of 115,126 COVID-19 cases were reported in Tasmania.
- Of these, 29,282 cases resided in the North, 25,291 cases resided in the North-West and 60,305 cases resided in the South.

1.2 Weekly number of COVID-19 cases per 1000 people since 15 December 2021, by region of residence and overall for Tasmanian residents.

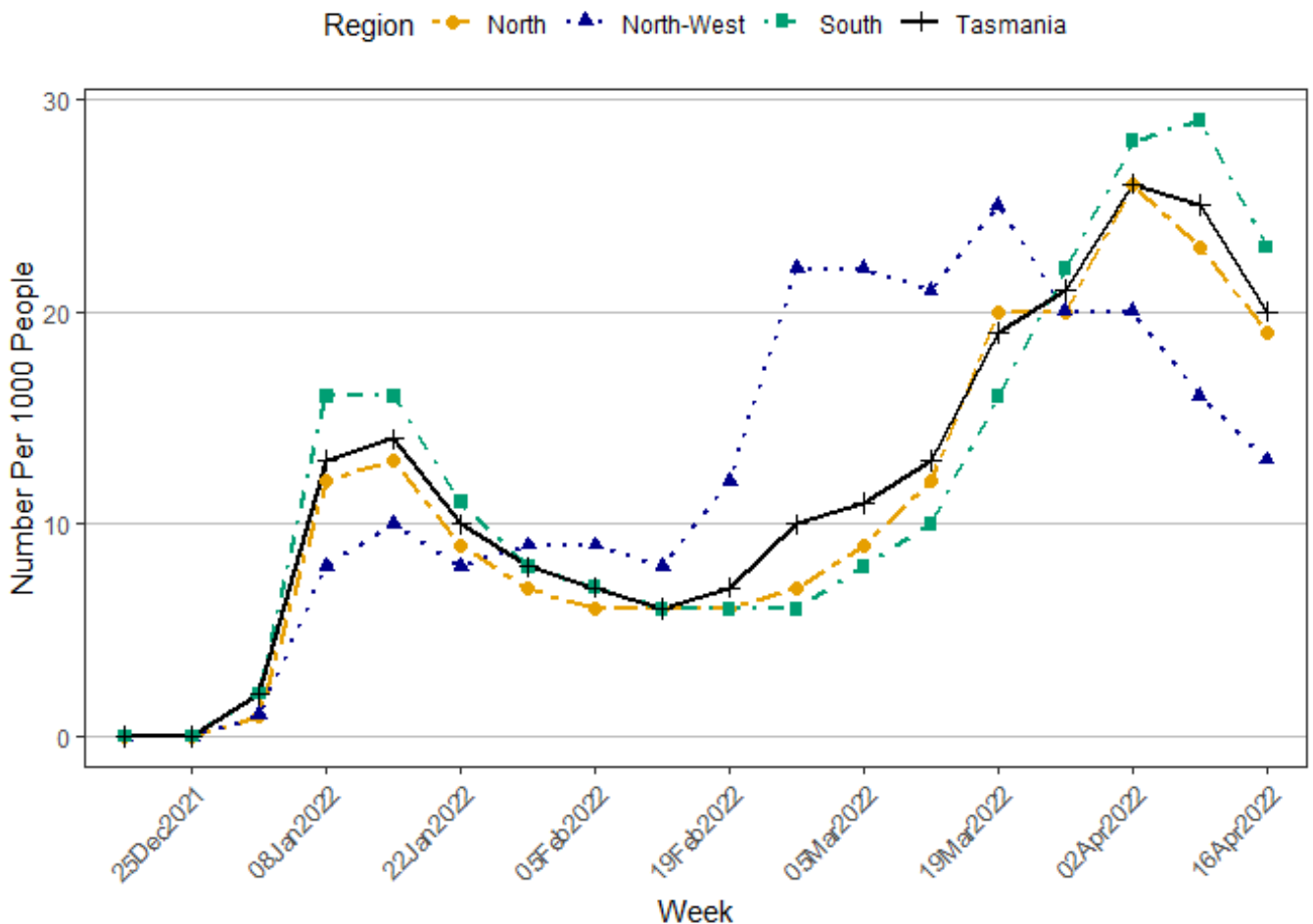


Figure 1: Weekly number of COVID-19 cases per 1000 people since 15 December 2021, by region of residence and overall for Tasmanian residents.

- From 15 December 2021 to 16 April 2022, the total number of cases per 1000 people in Tasmania was 213.
- From 15 December 2021 to 16 April 2022, the region with the highest overall number of cases per 1000 people was the North-West with 222.
- From 09 April 2022 to 16 April 2022, the weekly number of cases per 1000 people in Tasmania decreased from 25 to 20.
- From 09 April 2022 to 16 April 2022, the weekly number of cases per 1000 people in the North decreased from 23 to 19.
- From 09 April 2022 to 16 April 2022, the weekly number of cases per 1000 people in the North-West decreased from 16 to 13.
- From 09 April 2022 to 16 April 2022, the weekly number of cases per 1000 people in the South decreased from 29 to 23.

1.3 Weekly COVID-19 case numbers, and number of cases per 1000 people (rate), by Local Government Area

Table 2: COVID-19 cases and number of cases per 1000 people (rate) notified per week in Tasmania for each of the last 4-weeks, and total cases notified since 15 December 2021, by Local Government Area (LGA)*.

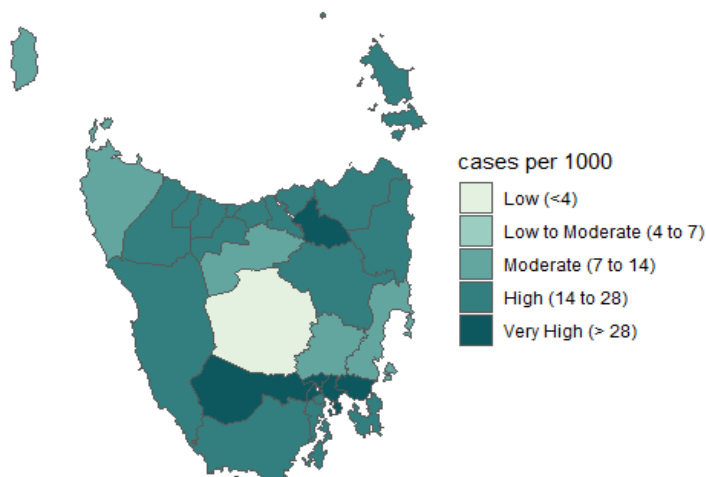
		26Mar2022		02Apr2022		09Apr2022		16Apr2022		Total Since 15 December 2021	
LGA	Population	Cases	Rate	Cases	Rate	Cases	Rate	Cases	Rate	Total Cases	Overall Rate
Break O'Day	6346	96	15	177	28	172	27	98	15	937	148
Brighton	18123	657	36	790	44	758	42	655	36	6,143	339
Burnie	19701	513	26	460	23	368	19	275	14	4,990	253
Central Coast	22157	395	18	421	19	345	16	294	13	4,737	214
Central Highlands	2166	16	7	15	7	7	3	11	5	105	48
Circular Head	8152	162	20	128	16	93	11	101	12	1,397	171
Clarence	58729	1,329	23	1,821	31	2,014	34	1,461	25	13,267	226
Derwent Valley	10518	258	25	393	37	345	33	271	26	2,138	203
Devonport	25747	488	19	508	20	389	15	313	12	6,932	269
Dorset	6685	142	21	147	22	132	20	168	25	1,085	162
Flinders	1004	29	29	54	54	16	16	10	10	131	130
George Town	7117	103	14	188	26	186	26	167	23	1,225	172
Glamorgan-Spring Bay	4750	44	9	55	12	50	11	52	11	504	106
Glenorchy	47963	1,233	26	1,378	29	1,446	30	1,218	25	11,600	242
Hobart	55250	1,114	20	1,324	24	1,374	25	1,082	20	11,419	207
Huon Valley	17966	311	17	437	24	414	23	354	20	2,880	160
Kentish	6393	95	15	115	18	95	15	52	8	1,111	174
King Island	1612	51	32	81	50	12	7	6	4	346	215
Kingborough	38628	704	18	1,004	26	1,097	28	891	23	7,899	204
Latrobe	11961	180	15	242	20	194	16	146	12	2,431	203

		26Mar2022		02Apr2022		09Apr2022		16Apr2022		Total Since 15 December 2021	
LGA	Population	Cases	Rate	Cases	Rate	Cases	Rate	Cases	Rate	Total Cases	Overall Rate
Launceston	68813	1,825	27	2,337	34	2,097	30	1,635	24	17,587	256
Meander Valley	20037	290	14	251	13	238	12	247	12	2,650	132
Northern Midlands	13598	314	23	338	25	255	19	251	18	2,755	203
Sorell	16030	360	22	472	29	471	29	394	25	3,419	213
Southern Midlands	6400	64	10	82	13	86	13	63	10	629	98
Tasman	2479	52	21	38	15	38	15	39	16	273	110
Waratah-Wynyard	13900	292	21	207	15	191	14	166	12	2,563	184
West Coast	4132	116	28	148	36	114	28	82	20	782	189
West Tamar	24423	241	10	362	15	349	14	314	13	2,905	119

*LGA is based on residential address provided at time of PCR testing or reporting of a positive RAT. Please note that this table excludes those who reported their region of residence to be interstate or overseas. All rates presented are calculated as cases per 1000 people.

1.4 Weekly number of cases per 1000 people, presented as a metric, by Local Government Area in Tasmania.

Case Rate - 03Apr2022 to 09Apr2022



Case Rate - 10Apr2022 to 16Apr2022

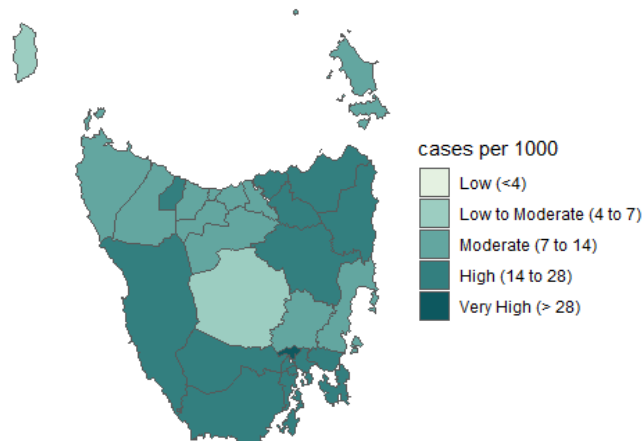


Figure 2: Weekly number of cases per 1000 people, presented as a metric from low (<4 cases) to very high (>28 cases), by Local Government Area in Tasmania.

- From 15 December 2021 to 16 April 2022, the Local Government Area with the highest total number of cases per 1000 people was Brighton with 339 cases, followed by Devonport with 269 cases.
- From 09 April 2022 to 16 April 2022, the weekly number of cases per 1000 people was very high (>28 cases per 1000 people) in Brighton.
- From 09 April 2022 to 16 April 2022, the weekly number of cases per 1000 people decreased in all Local Government Areas except for Central Highlands, Circular Head, Dorset, Glamorgan-Spring Bay, Meander Valley and Tasman.

1.5 Weekly COVID-19 case numbers, and number of cases per 1000 people (rate), by age group

Table 3: COVID-19 cases and number of cases per 1000 people (rate) per week notified in Tasmania for each of the last 4-weeks, and total number and overall number of cases per 1000 people (rate) since 15 December 2021, by age group.

		26Mar2022		02Apr2022		09Apr2022		16Apr2022		Total Since 15 December 2021	
Age Group	Population	Cases	Rate	Cases	Rate	Cases	Rate	Cases	Rate	Total Cases	Overall Rate
0-4	29,267	674	23	791	27	798	27	662	23	6,333	216
5-11	45,033	1,790	40	1,863	41	1,578	35	1,007	22	16,059	357
12-15	26,308	977	37	1,321	50	1,123	43	806	31	8,515	324
16-19	24,713	796	32	1,121	45	779	32	553	22	7,936	321
20-29	65,756	1,805	27	2,267	34	1,962	30	1,703	26	21,868	333
30-39	65,410	1,962	30	2,293	35	2,374	36	1,859	28	20,225	309
40-49	64,257	1,520	24	1,834	29	1,822	28	1,498	23	14,431	225
50-59	72,013	1,010	14	1,243	17	1,318	18	1,125	16	9,576	133
60-69	70,868	560	8	767	11	873	12	821	12	5,879	83
70-79	50,893	264	5	368	7	481	9	522	10	2,878	57
80-84	13,647	80	6	76	6	110	8	143	10	687	50
85+	12,615	69	5	76	6	167	13	156	12	739	59
Total	540,780	11,507	21	14,020	26	13,385	25	10,855	20	115,126	213

*Age group is based on age or date of birth provided at time of PCR testing or reporting of a positive RAT. People who have not provided a valid age or date of birth have been excluded. All rates presented are calculated as cases per 1000 people. Please note that this table excludes those who reported their region of residence to be interstate or overseas. Only Tasmanians are presented in this table. There have been an additional 4725 cases with an interstate or overseas postcode, with 464 occurring the latest reporting week.

- From 15 December 2021 to 16 April 2022, children aged 5-11 years had the highest total number of cases per 1000 people with 357 cases, followed by young adults aged 20-29 years with 333 cases.
- From 09 April 2022 to 16 April 2022, those aged 12-15 years had the highest weekly number of cases per 1000 people with 31 cases, followed by adults aged 30-39 years with 28 cases.

1.6 Weekly number of COVID-19 cases per 1000 people per week (rate) notified in Tasmania since 15 December 2021, by age group.

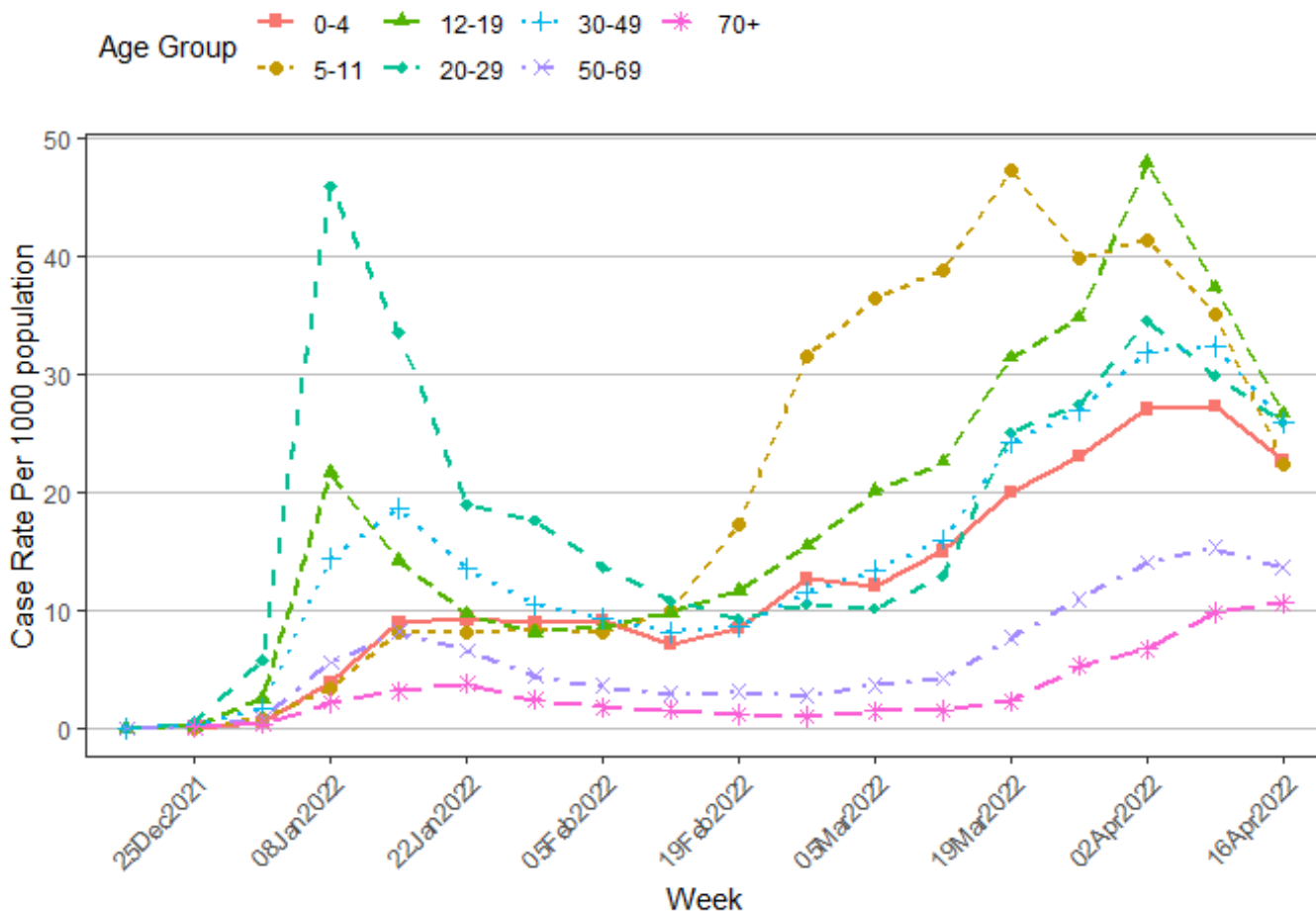


Figure 3: Weekly number of COVID-19 cases per 1000 people per week (rate) notified in Tasmania since 15 December 2021, by age group.

- From 09 April 2022 to 16 April 2022, the weekly number of cases per 1000 people increased in adults aged 70 years and older.
- From 09 April 2022 to 16 April 2022, the weekly number of cases per 1000 people decreased in all other age groups (below the age of 70 years).

1.7 Weekly COVID-19 case numbers in people who identify as Aboriginal and/or Torres Strait Islander people

Table 4: COVID-19 cases notified in Tasmania for each of the last 4-weeks, and total number of cases since 15 December 2021, by reported Indigenous status.

Reported Indigenous Status	26Mar2022	02Apr2022	09Apr2022	16Apr2022	Total since 15 December 2021
People who identify as Aboriginal and/or Torres Strait Islander	901 (8%)	911 (6%)	867 (6%)	756 (7%)	6740 (6%)
Non Indigenous	9749 (85%)	12125 (86%)	11529 (86%)	9157 (84%)	84691 (74%)
Not stated	857 (7%)	984 (7%)	989 (7%)	942 (9%)	23695 (21%)
Total	11507 (100%)	14020 (100%)	13385 (100%)	10855 (100%)	115126 (100%)

*Please note that this table excludes those who reported their region of residence to be interstate or overseas. Region is based on residential postcode provided to Public Health Services. Percentages are based on total cases per region per week. Percentages have been rounded to the nearest whole number and may not add up to 100%.

- From 15 December 2021 to 16 April 2022, 6,740 people who identify as Aboriginal and/or Torres Strait Islander people were diagnosed with COVID-19. This comprised 6% of overall cases diagnosed in Tasmania.
- From 09 April 2022 to 16 April 2022, 756 people who identify as Aboriginal and/or Torres Strait Islander people were diagnosed with COVID-19 in Tasmania.

1.8 Weekly COVID-19 case numbers by method of diagnosis

Table 5: Weekly number of people diagnosed with COVID-19 in Tasmania from 15 December 2021 to 16 April 2022, by PCR and rapid antigen testing (RAT).

Reporting Week	PCR	RAT	Total Confirmed Cases
18Dec2021	7 (100%)	0 (0%)	7
25Dec2021	157 (100%)	0 (0%)	157
01Jan2022	1165 (100%)	0 (0%)	1,165
08Jan2022	5917 (76%)	1839 (24%)	7,756
15Jan2022	2813 (36%)	5106 (64%)	7,919
22Jan2022	2159 (38%)	3488 (62%)	5,647
29Jan2022	1537 (33%)	3068 (67%)	4,605
05Feb2022	1238 (31%)	2743 (69%)	3,981
12Feb2022	1009 (28%)	2578 (72%)	3,587
19Feb2022	1025 (26%)	2927 (74%)	3,952
26Feb2022	1030 (19%)	4303 (81%)	5,333
05Mar2022	1143 (18%)	5062 (82%)	6,205
12Mar2022	1353 (19%)	5836 (81%)	7,189
19Mar2022	1918 (18%)	8736 (82%)	10,654
26Mar2022	2347 (20%)	9588 (80%)	11,935
02Apr2022	2773 (19%)	11722 (81%)	14,495
09Apr2022	2715 (19%)	11232 (81%)	13,947
16Apr2022	2106 (19%)	9213 (81%)	11,319

*Case numbers include positive notifications to Public Health Services from pathology laboratories providing PCR results, and self-reported rapid antigen tests (RATs). Where both a PCR and RAT are notified to Public Health Services for the same individual, the PCR test is reported.

Since 9 January 2022, rapid antigen testing (RAT) has been the predominant diagnostic method in Tasmania and currently comprises 81% of weekly positive COVID-19 notifications to Public Health Services.

1.9 Weekly number of COVID-19 cases in Tasmania per day from 15 December 2021 to 16 April 2022, by method of diagnosis (PCR and rapid antigen tests).

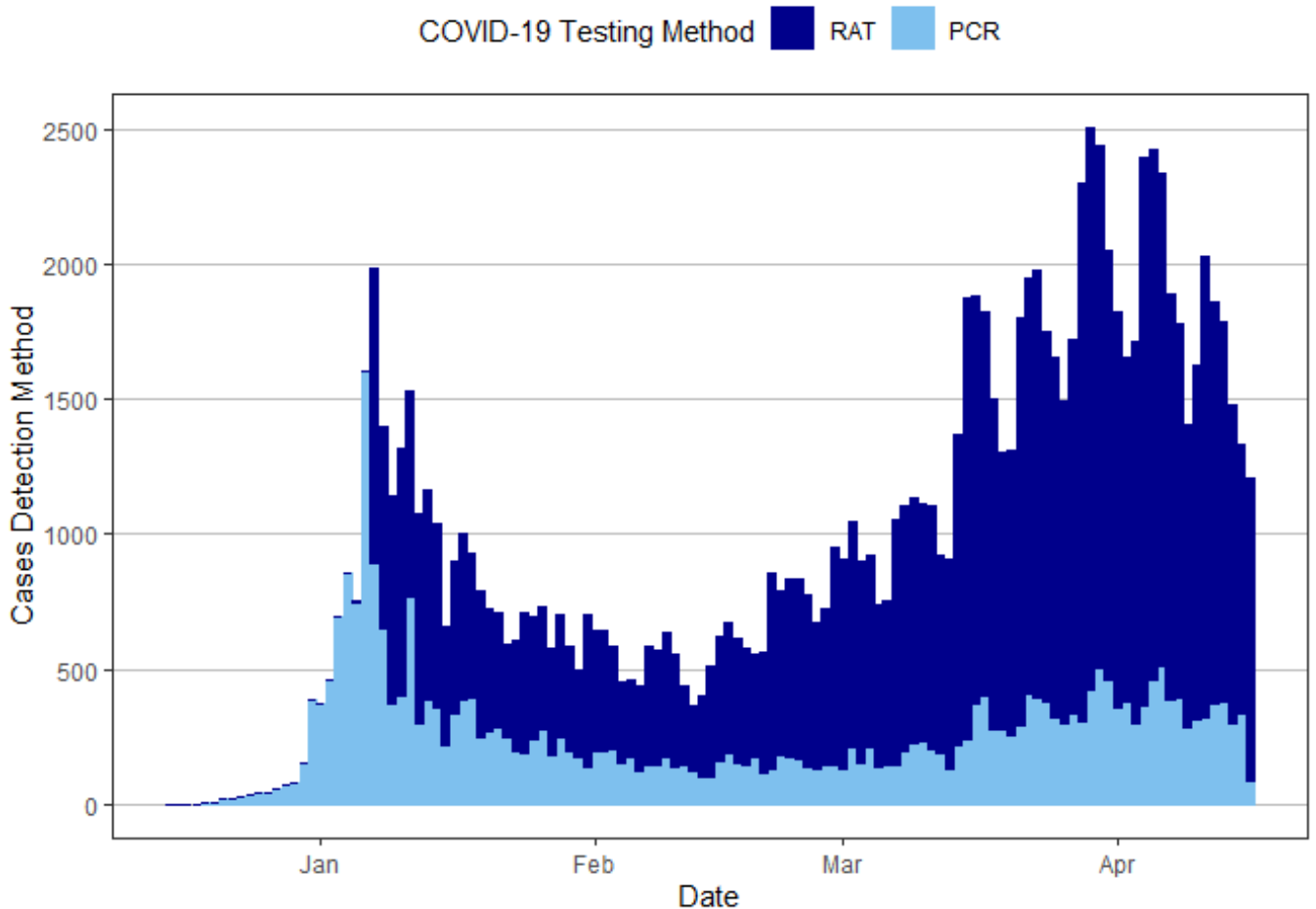


Figure 4. Number of COVID-19 cases in Tasmania per day from 15 December 2021 to 16 April 2022, by method of diagnosis (PCR and rapid antigen tests).

- From 2020 to early January 2022, PCR testing was the main method of testing used for the diagnosis of COVID-19. Since rapid antigen tests (RATs) became available, RATs are now the dominant testing method for COVID-19 in Tasmania.

Section 2: PCR Testing in Tasmania

2.1 PCR positivity percentage by region of residence

Table 6: Number of COVID-19 PCR tests (both positive and negative) and percentage of PCR tests positive for COVID-19 (% Pos) for each of the last 4-weeks and since 15 December 2021, by region of residence in Tasmania.

Region of Residence	26Mar2022		02Apr2022		09Apr2022		16Apr2022		Since 15 December 2021	
	Tests	% Pos	Tests	% Pos	Tests	% Pos	Tests	% Pos	Total Tests	Overall % Pos
North	2,932	22	2,981	26	3,114	23	2,397	24	51,013	17
North-West	1,643	23	1,684	23	1,395	22	1,293	20	35,375	16
South	5,973	22	7,021	24	7,517	23	6,037	21	114,671	16
Unknown Region	184	23	170	15	161	17	144	18	3,396	14
Tasmania Total	10,732	22	11,856	24	12,187	23	9,871	22	204,455	16

*Please note that this table excludes those who reported their region of residence to be interstate or overseas. Region is based on residential address provided at time of PCR testing.

- From 15 December 2021 to 16 April 2022, a total of 204,455 PCR tests were performed in Tasmania. Of these, 16% tested positive for COVID-19.
- From 09 April 2022 to 16 April 2022, 9,871 PCR tests were performed in Tasmania. Of these, 22% tested positive for COVID-19.

2.2 Weekly percentage of PCR tests positive for COVID-19 from 15 December 2021 to 16 April 2022, by region of residence and overall for Tasmanian residents.

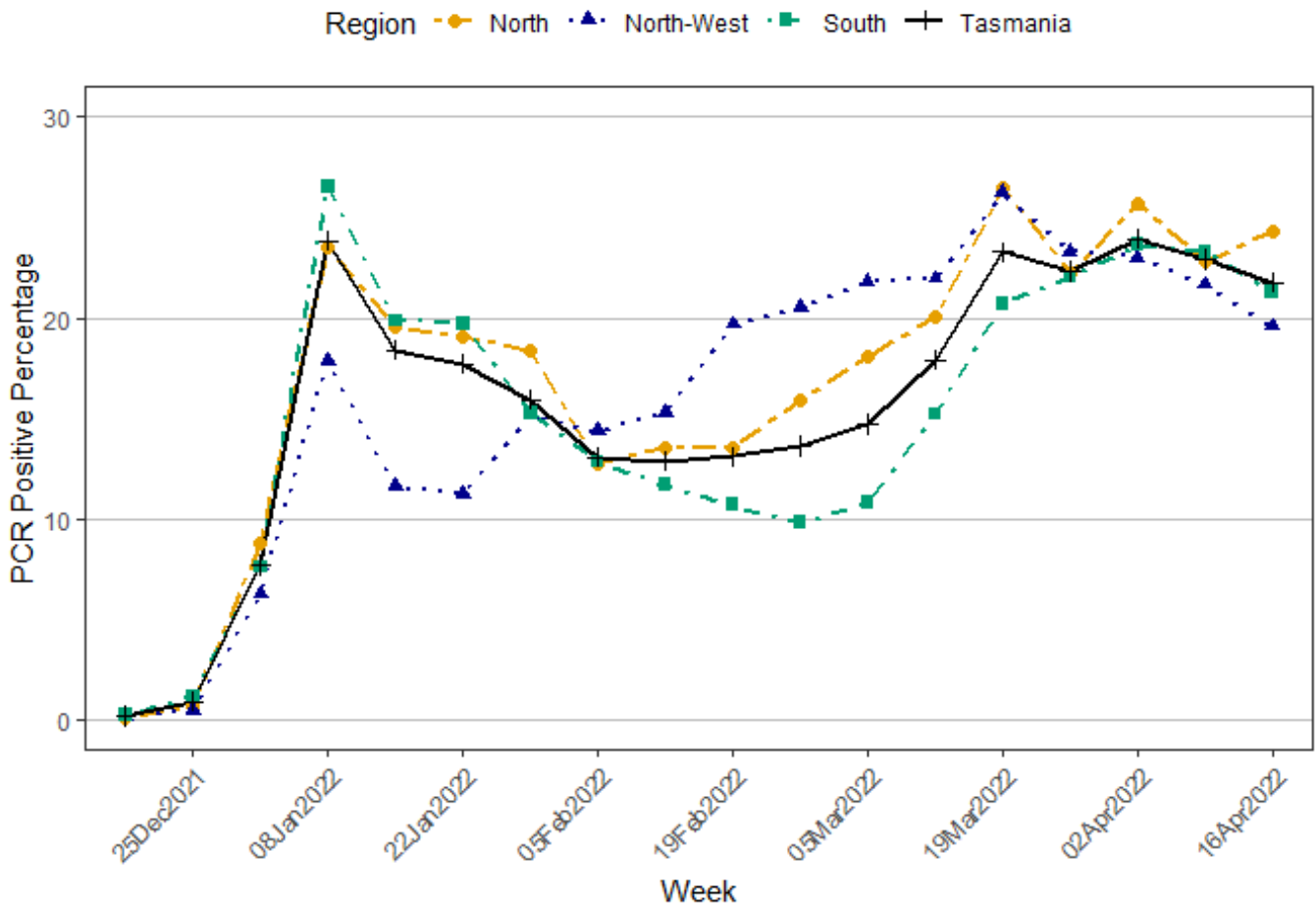


Figure 5: Weekly percentage of PCR tests positive for COVID-19 from 15 December 2021 to 16 April 2022, by region of residence and overall for Tasmanian residents.

- From 09 April 2022 to 16 April 2022, the North had the highest PCR test positivity in the state with 24% of PCR tests performed testing positive for COVID-19.
- From 09 April 2022 to 16 April 2022, the number of PCR tests that tested positive for COVID-19 in the North-West decreased from 22% to 20%.
- From 09 April 2022 to 16 April 2022, the number of PCR tests that tested positive for COVID-19 in the South decreased from 23% to 21%.


2.3 PCR testing by age group

Table 7: Number of PCR tests performed in Tasmania and number of PCR tests per 1000 people (rate) per week for each of the last 4-weeks and since 15 December 2021, by age group.

		26Mar2022		02Apr2022		09Apr2022		16Apr2022		Total Since 15 December 2021	
Age Group	Population	Tests	Rate	Tests	Rate	Tests	Rate	Tests	Rate	Total Tests	Overall Rate
0-4	29,267	859	29	853	29	903	31	683	23	10,208	349
5-11	45,033	766	17	813	18	770	17	521	12	10,105	224
12-15	26,308	465	18	500	19	441	17	250	10	5,917	225
16-19	24,713	429	17	579	23	450	18	261	11	8,934	362
20-29	65,756	1,517	23	1,877	29	1,656	25	1,290	20	38,902	592
30-39	65,410	1,832	28	1,933	30	1,988	30	1,508	23	35,670	545
40-49	64,257	1,429	22	1,574	24	1,429	22	1,067	17	24,470	381
50-59	72,013	1,107	15	1,210	17	1,167	16	890	12	22,017	306
60-69	70,868	850	12	828	12	1,006	14	851	12	17,522	247
70-79	50,893	706	14	775	15	878	17	920	18	13,823	272
80-84	13,647	268	20	300	22	415	30	433	32	5,676	416
85+	12,615	504	40	614	49	1,084	86	1,197	95	11,211	889
Total	540,780	10,732	20	11,856	22	12,187	23	9,871	18	204,455	378

*Please note that this table excludes those who reported their region of residence to be interstate or overseas. Age group is based on the age provided at time of PCR testing. All rates presented are calculated as number of PCR tests per 1000 people.

- From 15 December 2021 to 16 April 2022, a total of 204,455 PCR tests were performed in Tasmania.
- From 15 December 2021 to 16 April 2022, the total number of PCR tests per 1000 people in Tasmania was 378.
- From 15 December 2021 to 16 April 2022, the overall number of PCR tests per 1000 people was highest in those aged 85 years and older with 889, followed by young adults aged 20-29 years with 592.
- In the week ending 16 April 2022, there were 9871 PCR tests performed across the state.
- In the week ending 16 April 2022, the weekly number of PCR tests per 1000 people in Tasmania was 18, decreasing from 23 in the previous week.
- In the week ending 16 April 2022, the weekly number of PCR tests per 1000 people was highest in adults aged 85 years and older with 95.

- 
- From 15 December 2021 to 16 April 2022, 676 reported cases were admitted to hospital. Of these, 301 reported cases (45%) were admitted to hospital due to COVID-19.
 - From 15 December 2021 to 16 April 2022, 25 patients with COVID-19 were admitted to ICU.
 - From 15 December 2021 to 16 April 2022, 30 reported cases died where COVID-19 caused or contributed to their death.

3.2 Clinical severity and deaths in reported COVID-19 cases, by age group

Table 11: Number of cases hospitalised with COVID-19, number of cases hospitalised due to COVID-19, number of cases with COVID-19 admitted to ICU (for any reason), and deaths for which COVID-19 was a cause or contributing factor from 15 December 2021 to 16 April 2022, by age group.

Age Group (years)	All Hospital Admissions with COVID-19	Hospital Admissions due to COVID-19	Intensive Care Admissions	Deaths
0-4	50	30	3	-
5-11	16	3	-	-
12-15	13	3	-	-
16-19	13	2	1	-
20-29	84	23	4	-
30-39	78	24	2	-
40-49	52	26	2	-
50-59	62	29	2	1
60-69	85	41	5	10
70-79	103	55	6	2
80-84	49	30	-	3
85+	71	35	-	14
Total	676	301	25	30

Age group is based on age provided at time of PCR testing or reporting of a positive RAT. This table includes interstate and overseas residents who were diagnosed and managed for COVID-19 in Tasmania. Only recorded deaths, where the death is specifically attribute to COVID-19 have been included. Where the death is reported to has been attributed to 'other causes' it has been excluded.

- From 15 December 2021 to 16 April 2022, 114 reported cases younger than 50-years of age were hospitalised due to COVID-19. This comprised 38% of all reported cases hospitalised due to COVID-19. Twelve of these reported cases were admitted to ICU.
- From 15 December 2021 to 16 April 2022, 30 reported cases aged 4-years or younger were hospitalised due to COVID-19. This comprised 10% of all reported cases hospitalised due to COVID-19. Three of these reported cases were admitted to ICU.
- From 15 December 2021 to 16 April 2022, all deaths due to or contributed to by COVID-19 occurred in reported cases aged 50-years and older.

3.3 Clinical severity and deaths in reported COVID-19 cases, by vaccination status

Table 12: Number of cases hospitalised with COVID-19, number of cases hospitalised due to COVID-19, number of cases with COVID-19 admitted to ICU (for any reason), and deaths for which COVID-19 was a cause or contributing factor from 15 December 2021 to 16 April 2022, by vaccination status.

Number of Reported Vaccination Doses	Confirmed Cases	All Hospital Admissions with COVID-19	Hospital Admissions due to COVID-19	Intensive Care Admissions	Deaths
0 doses	11,264	160	73	9	10
1 dose	12,503	29	13	1	-
2 or more doses	56,419	462	205	14	16
Not reported	39,667	25	10	1	4
Total	119,853	676	301	25	30

*This table includes interstate and overseas residents who were diagnosed and managed for COVID-19 in Tasmania. Data should be interpreted with caution as vaccination information is based on self-report at the time of notification of a positive PCR or RAT. Only recorded deaths where the death is specifically attributed to COVID-19 have been included. Where the recorded death has been attributed to 'other causes' it has been excluded.

- From 15 December 2021 to 16 April 2022, the case fatality rate in reported cases who were unvaccinated was 0.089% while the case fatality rate in reported cases who had received two or more doses of vaccine was 0.028%.
- From 15 December 2021 to 16 April 2022, the case fatality rate in reported cases who were unvaccinated was three times higher than the case fatality rate in reported cases who had received two or more doses of vaccine.



Department of **Health**
GPO Box 125
Hobart TAS 7001

1300 135 513

www.health.tas.gov.au